

7.10 T2010 & T2015 HC05 Logic PCB

T2010 & T2015 HC05 Logic Parts List (IPN 220-01377-01)

Parts List Amendments

Ref	Var	IPN	Description	Ref	Var	IPN	Description
C500		016-08470-01	CAP ELECT SMD 6*4MM 47U 16V	C633		016-08470-01	CAP ELECT SMD 6*4MM 47U 16V
C501		015-23680-08	CAP CER 0805 CHIP 680P 10% X7R 50V	C634		015-24470-08	CAP CER 0805 CHIP 4N7 10% X7R 50V
C501A		018-14100-00	CAP 0603 CHIP 1N 50V X7R +-10%	C635		015-06100-08	CAP CER 1206 CHIP 100N 10% X7R 50V
C502		018-15100-00	CAP 0603 CHIP 10N 50V X7R +-10%	C636		015-06100-08	CAP CER 1206 CHIP 100N 10% X7R 50V
C503		018-15100-00	CAP 0603 CHIP 10N 50V X7R +-10%	C637		018-11470-00	CAP 0603 CHIP 4P7 50V NPO +-0.25P
C504		015-06100-08	CAP CER 1206 CHIP 100N 10% X7R 50V	C638		015-06100-08	CAP CER 1206 CHIP 100N 10% X7R 50V
C505		015-06100-08	CAP CER 1206 CHIP 100N 10% X7R 50V	C639		016-08470-01	CAP ELECT SMD 6*4MM 47U 16V
C506		018-12220-00	CAP 0603 CHIP 22P 50V NPO +-5%	C640		016-08470-01	CAP ELECT SMD 6*4MM 47U 16V
C507		018-12220-00	CAP 0603 CHIP 22P 50V NPO +-5%	C641		018-14100-00	CAP 0603 CHIP 1N 50V X7R +-10%
C509		018-14100-00	CAP 0603 CHIP 1N 50V X7R +-10%	C642		015-23220-01	CAP CER 0805 CHIP 220P 5% NPO 50V
C514		018-12220-00	CAP 0603 CHIP 22P 50V NPO +-5%	C643		015-25150-08	CAP CER 0805 CHIP 15N 10% X7R 50V
C515		018-12220-00	CAP 0603 CHIP 22P 50V NPO +-5%	C644		015-25150-08	CAP CER 0805 CHIP 15N 10% X7R 50V
C517		015-23680-08	CAP CER 0805 CHIP 680P 10% X7R 50V	C645		018-13150-00	CAP 0603 CHIP 150P 50V NPO +-5%
C518		015-06100-08	CAP CER 1206 CHIP 100N 10% X7R 50V	C646		014-07470-00	CAP TANT CHIP 4U7 3.5 X 2.8MM 267 SERIES
C519		018-12220-00	CAP 0603 CHIP 22P 50V NPO +-5%	C647		015-06100-08	CAP CER 0805 CHIP 100N 10% X7R 50V
C520		015-25220-08	CAP CER 0805 CHIP 22N 10% X7R 50V	C648		016-08470-01	CAP ELECT SMD 6*4MM 47U 16V
C521		015-06100-08	CAP CER 1206 CHIP 100N 10% X7R 50V	C650		018-13150-00	CAP 0603 CHIP 150P 50V NPO +-5%
C522		018-13150-00	CAP 0603 CHIP 150P 50V NPO +-5%	C651		018-13150-00	CAP 0603 CHIP 150P 50V NPO +-5%
C524		016-08470-01	CAP ELECT SMD 6*4MM 47U 16V	#C700		015-06100-08	CAP CER 1206 CHIP 100N 10% X7R 50V
C525		018-13150-00	CAP 0603 CHIP 150P 50V NPO +-5%	C702		015-06100-08	CAP CER 1206 CHIP 100N 10% X7R 50V
C526		018-13150-00	CAP 0603 CHIP 150P 50V NPO +-5%	#C703		015-06100-08	CAP CER 1206 CHIP 100N 10% X7R 50V
C527		018-13150-00	CAP 0603 CHIP 150P 50V NPO +-5%	C705		015-06100-08	CAP CER 1206 CHIP 100N 10% X7R 50V
C528		018-13150-00	CAP 0603 CHIP 150P 50V NPO +-5%				
C530		018-13150-00	CAP 0603 CHIP 150P 50V NPO +-5%	D500		001-10000-70	(S) DIODE SMD BAV70 DUAL SWITCH SOT-23 C
C540		018-13150-00	CAP 0603 CHIP 150P 50V NPO +-5%				
C541		018-13150-00	CAP 0603 CHIP 150P 50V NPO +-5%	IC501		002-10936-60	(LS) IC SMD ST93C66CM6 4K EEPROM SER MI
C542		018-13100-00	CAP 0603 CHIP 100P 50V NPO +-5%	IC504		002-10340-64	(S) IC SMD MC34064 LO VOLT SENSE
C543		018-13100-00	CAP 0603 CHIP 100P 50V NPO +-5%	IC505		002-26870-55	(LSH) IC 68HC705C9 MPU (T201X 2.05) MAS
C544		018-13100-00	CAP 0603 CHIP 100P 50V NPO +-5%	IC506		002-10140-21	(S) IC MC14021BDR2 8BIT SHIFT REGSTR.SO
C545		018-13100-00	CAP 0603 CHIP 100P 50V NPO +-5%	IC507		002-10140-21	(S) IC MC14021BDR2 8BIT SHIFT REGSTR.SO
C546		015-24330-08	CAP CER 0805 CHIP 3N3 10% X7R 50V	IC509		002-74905-95	(S) IC SMD 74HC595 SHIFT REGISTER
C600		015-25150-08	CAP CER 0805 CHIP 15N 10% X7R 50V	#IC510		002-74901-32	(S) IC SMD 74HC132 HCMOS QUAD SCHMT SO
C601		014-07470-00	CAP TANT CHIP 4U7 3.5 X 2.8MM 267 SERIES	IC511		002-74901-32	(S) IC SMD 74HC132 HCMOS QUAD SCHMT SO-
C602		018-12820-00	CAP 0603 CHIP 82P 50V NPO +-5%	IC513		002-10078-08	(S) IC SMD 78L08 8V REG SO8
C603		015-23220-01	CAP CER 0805 CHIP 220P 5% NPO 50V	IC601		002-10003-24	(S) IC SMD 324 QUAD OP AMP SO14
C604		014-07470-00	CAP TANT CHIP 4U7 3.5 X 2.8MM 267 SERIES	IC602		002-10003-24	(S) IC SMD 324 QUAD OP AMP SO14
C605		014-07470-00	CAP TANT CHIP 4U7 3.5 X 2.8MM 267 SERIES	IC603		002-10003-24	(S) IC SMD 324 QUAD OP AMP SO14
C606		015-06100-08	CAP CER 1206 CHIP 100N 10% X7R 50V	IC604		002-10003-58	(S) IC SMD LM358 DUAL OP AMP
C607		015-06100-08	CAP CER 1206 CHIP 100N 10% X7R 50V	IC614		002-10040-53	(S) IC 4053 SMD TRIPLE 2CH MULTI-PLEXR
C608		018-15100-00	CAP 0603 CHIP 10N 50V X7R +-10%				
C609		018-12470-00	CAP 0603 CHIP 47P 50V NPO +-5%	L501		056-10330-00	IND FXD SMD 330NH 3.2*2.5*1.6 SIEMENS SM
C610		014-07470-00	CAP TANT CHIP 4U7 3.5 X 2.8MM 267 SERIES				
C611		018-13100-00	CAP 0603 CHIP 100P 50V NPO +-5%	P1		240-10000-01	CONN SMD 24WAY (PLUG)
C612		014-07470-00	CAP TANT CHIP 4U7 3.5 X 2.8MM 267 SERIES	P2		240-10000-01	CONN SMD 24WAY (PLUG)
C613		015-24470-08	CAP CER 0805 CHIP 4N7 10% X7R 50V				
C614		015-25150-08	CAP CER 0805 CHIP 15N 10% X7R 50V	Q501		000-10084-81	(S) XSTR SMD BC848BW NPN SOT-323 SMALL S
C615		015-25150-08	CAP CER 0805 CHIP 15N 10% X7R 50V	Q502		000-10084-81	(S) XSTR SMD BC848BW NPN SOT-323 SMALL S
C616		015-25150-08	CAP CER 0805 CHIP 15N 10% X7R 50V	Q503		000-10008-69	(S) XSTR SMD BC869 PNP 1W 2A SOT-89
C617		018-15100-00	CAP 0603 CHIP 10N 50V X7R +-10%	Q504		000-10084-81	(S) XSTR SMD BC848BW NPN SOT-323 SMALL S
C618		018-15100-00	CAP 0603 CHIP 10N 50V X7R +-10%	Q505		000-10085-71	(S) XSTR SMD BC857BW PNP SOT-323 SMALL S
C619		018-15100-00	CAP 0603 CHIP 10N 50V X7R +-10%	Q506		000-10085-71	(S) XSTR SMD BC857BW PNP SOT-323 SMALL S
C620		018-15100-00	CAP 0603 CHIP 10N 50V X7R +-10%	Q507		000-10003-12	(S) XSTR SMD BFR31 N JFET SOT-23
C621		018-15100-00	CAP 0603 CHIP 10N 50V X7R +-10%	Q508		000-10085-71	(S) XSTR SMD BC857BW PNP SOT-323 SMALL S
C622		018-15100-00	CAP 0603 CHIP 10N 50V X7R +-10%	Q509		000-10085-71	(S) XSTR SMD BC857BW PNP SOT-323 SMALL S
C623		015-06100-08	CAP CER 1206 CHIP 100N 10% X7R 50V	Q510		000-10084-81	(S) XSTR SMD BC848BW NPN SOT-323 SMALL S
C624		018-15100-00	CAP 0603 CHIP 10N 50V X7R +-10%	Q520		000-10084-81	(S) XSTR SMD BC848BW NPN SOT-323 SMALL S
C625		018-15100-00	CAP 0603 CHIP 10N 50V X7R +-10%	Q601		000-10084-81	(S) XSTR SMD BC848BW NPN SOT-323 SMALL S
C626		014-07470-00	CAP TANT CHIP 4U7 3.5 X 2.8MM 267 SERIES	Q602		000-10084-81	(S) XSTR SMD BC848BW NPN SOT-323 SMALL S
C627		015-06100-08	CAP CER 1206 CHIP 100N 10% X7R 50V	Q603		000-10084-81	(S) XSTR SMD BC848BW NPN SOT-323 SMALL S
C628		018-15100-00	CAP 0603 CHIP 10N 50V X7R +-10%	Q604		000-10084-81	(S) XSTR SMD BC848BW NPN SOT-323 SMALL S
C629		015-23220-01	CAP CER 0805 CHIP 220P 5% NPO 50V	Q605		000-10085-71	(S) XSTR SMD BC857BW PNP SOT-323 SMALL S
#C630		014-07470-00	CAP TANT CHIP 4U7 3.5 X 2.8MM 267 SERIE	Q606		000-10084-81	(S) XSTR SMD BC848BW NPN SOT-323 SMALL S
C630		015-25150-08	CAP CER 0805 CHIP 15N 10% X7R 50V	Q607		000-10084-81	(S) XSTR SMD BC848BW NPN SOT-323 SMALL S
C632		014-07470-00	CAP TANT CHIP 4U7 3.5 X 2.8MM 267 SERIES	Q608		000-10084-81	(S) XSTR SMD BC848BW NPN SOT-323 SMALL S

Ref	Var	IPN	Description	Ref	Var	IPN	Description
R501		038-15470-00	RES 0603 CHIP 47K 1/16W +-5%	R618		038-17100-00	RES 0603 CHIP 1M 1/16W +-5%
R502		038-15470-00	RES 0603 CHIP 47K 1/16W +-5%	R619		038-15100-00	RES 0603 CHIP 10K 1/16W +-5%
R503		038-14220-00	RES 0603 CHIP 2K2 1/16W +-5%	R620		036-15270-00	RES M/F 0805 CHIP 27K 5%
R504		038-13220-00	RES 0603 CHIP 220E 1/16W +-5%	R621		036-16390-00	RES M/F 0805 CHIP 390K 5%
R505		036-16150-00	RES M/F 0805 CHIP 150K 5%	R622		038-15100-00	RES 0603 CHIP 10K 1/16W +-5%
R506		038-15100-00	RES 0603 CHIP 10K 1/16W +-5%	R623		038-14680-00	RES 0603 CHIP 6K8 1/16W +-5%
R507		038-14470-00	RES 0603 CHIP 4K7 1/16W +-5%	R624		038-15100-00	RES 0603 CHIP 10K 1/16W +-5%
RV507		042-15500-01	RES PRESET SMD 50K +-25% 4X4.5X2.5MM 0.	R625		038-14680-00	RES 0603 CHIP 6K8 1/16W +-5%
R508		038-16100-00	RES 0603 CHIP 100K 1/16W +-5%	R626		036-15270-00	RES M/F 0805 CHIP 27K 5%
R509		038-14220-00	RES 0603 CHIP 2K2 1/16W +-5%	R627		036-16390-00	RES M/F 0805 CHIP 390K 5%
R510		036-18100-00	RES M/F 0805 CHIP 10M 10%	R628		038-15100-00	RES 0603 CHIP 10K 1/16W +-5%
R511		038-16470-00	RES 0603 CHIP 470K 1/16W +-5%	R629		038-15270-00	RES 0603 CHIP 27K 1/16W +-5%
R512		038-16100-00	RES 0603 CHIP 100K 1/16W +-5%	R630		038-17100-00	RES 0603 CHIP 1M 1/16W +-5%
R513		038-10000-00	RES 0603 CHIP ZERO OHM 1/16W +-5%	R631		038-14100-00	RES 0603 CHIP 1K0 1/16W +-5%
R514		038-16100-00	RES 0603 CHIP 100K 1/16W +-5%	R632		036-16390-00	RES M/F 0805 CHIP 390K 5%
R515		038-16100-00	RES 0603 CHIP 100K 1/16W +-5%	R633		038-15100-00	RES 0603 CHIP 10K 1/16W +-5%
R516		038-15470-00	RES 0603 CHIP 47K 1/16W +-5%	R634		038-14680-00	RES 0603 CHIP 6K8 1/16W +-5%
R518		038-14100-00	RES 0603 CHIP 1K0 1/16W +-5%	R635		038-16220-00	RES 0603 CHIP 220K 1/16W +-5%
R519		038-14100-00	RES 0603 CHIP 1K0 1/16W +-5%	R636		038-16100-00	RES 0603 CHIP 100K 1/16W +-5%
R520		038-15470-00	RES 0603 CHIP 47K 1/16W +-5%	R637		038-16100-00	RES 0603 CHIP 100K 1/16W +-5%
R521		038-15100-00	RES 0603 CHIP 10K 1/16W +-5%	R638		038-15100-00	RES 0603 CHIP 10K 1/16W +-5%
R522		038-14470-00	RES 0603 CHIP 4K7 1/16W +-5%	R639		038-14220-00	RES 0603 CHIP 2K2 1/16W +-5%
R523		036-16470-00	RES M/F 0805 CHIP 470K 5%	R640		038-17100-00	RES 0603 CHIP 1M 1/16W +-5%
R524		038-16100-00	RES 0603 CHIP 100K 1/16W +-5%	R641		036-16150-00	RES M/F 0805 CHIP 150K 5%
R525		038-15470-00	RES 0603 CHIP 47K 1/16W +-5%	R642		038-16100-00	RES 0603 CHIP 100K 1/16W +-5%
R526		038-15100-00	RES 0603 CHIP 10K 1/16W +-5%	R643		036-16330-00	RES M/F 0805 CHIP 330K 5%
R527		038-15470-00	RES 0603 CHIP 47K 1/16W +-5%	R644		038-17100-00	RES 0603 CHIP 1M 1/16W +-5%
R528		038-10000-00	RES 0603 CHIP ZERO OHM 1/16W +-5%	R645		038-16100-00	RES 0603 CHIP 100K 1/16W +-5%
R529		038-15470-00	RES 0603 CHIP 47K 1/16W +-5%	R646		036-16330-00	RES M/F 0805 CHIP 330K 5%
R530		038-14470-00	RES 0603 CHIP 4K7 1/16W +-5%	R647		038-14220-00	RES 0603 CHIP 2K2 1/16W +-5%
R531		036-18100-00	RES M/F 0805 CHIP 10M 10%	R648		038-16220-00	RES 0603 CHIP 220K 1/16W +-5%
R532		038-15470-00	RES 0603 CHIP 47K 1/16W +-5%	R649		038-17100-00	RES 0603 CHIP 1M 1/16W +-5%
R533		038-15470-00	RES 0603 CHIP 47K 1/16W +-5%	R650		038-14100-00	RES 0603 CHIP 1K0 1/16W +-5%
R534		038-15470-00	RES 0603 CHIP 47K 1/16W +-5%	R651		038-15150-00	RES 0603 CHIP 15K 1/16W +-5%
R535		036-14270-00	RES M/F 0805 CHIP 2K7 5%	R652		038-14470-00	RES 0603 CHIP 4K7 1/16W +-5%
R536		038-15470-00	RES 0603 CHIP 47K 1/16W +-5%	R653		036-14270-00	RES M/F 0805 CHIP 2K7 5%
R537		038-15100-00	RES 0603 CHIP 10K 1/16W +-5%	R654		038-13220-00	RES 0603 CHIP 220E 1/16W +-5%
R538		038-15100-00	RES 0603 CHIP 10K 1/16W +-5%	R655		038-14220-00	RES 0603 CHIP 2K2 1/16W +-5%
R539		038-15100-00	RES 0603 CHIP 10K 1/16W +-5%	R656		038-14220-00	RES 0603 CHIP 2K2 1/16W +-5%
R540		038-15100-00	RES 0603 CHIP 10K 1/16W +-5%	R657		036-14120-00	RES M/F 0805 CHIP 1K2 5%
R541		038-15100-00	RES 0603 CHIP 10K 1/16W +-5%	R658		036-16150-00	RES M/F 0805 CHIP 150K 5%
R542		038-15470-00	RES 0603 CHIP 47K 1/16W +-5%	R659		036-14270-00	RES M/F 0805 CHIP 2K7 5%
R543		038-14220-00	RES 0603 CHIP 2K2 1/16W +-5%	R660		038-15100-00	RES 0603 CHIP 10K 1/16W +-5%
R544		038-15100-00	RES 0603 CHIP 10K 1/16W +-5%	R661		038-15470-00	RES 0603 CHIP 47K 1/16W +-5%
R546		038-15100-00	RES 0603 CHIP 10K 1/16W +-5%	R662		038-14100-00	RES 0603 CHIP 1K0 1/16W +-5%
R547		038-15470-00	RES 0603 CHIP 47K 1/16W +-5%	R663		038-15470-00	RES 0603 CHIP 47K 1/16W +-5%
R568		038-14100-00	RES 0603 CHIP 1K0 1/16W +-5%	R664		036-15220-00	RES M/F 0805 CHIP 22K 5%
R569		038-16100-00	RES 0603 CHIP 100K 1/16W +-5%	R665		036-16470-00	RES M/F 0805 CHIP 470K 5%
R570		038-15470-00	RES 0603 CHIP 47K 1/16W +-5%	R666		036-16150-00	RES M/F 0805 CHIP 150K 5%
R571		038-15470-00	RES 0603 CHIP 47K 1/16W +-5%	R667		038-17100-00	RES M/F 0805 CHIP 1M 1/16W +-5%
R572		038-15470-00	RES 0603 CHIP 47K 1/16W +-5%	R668		038-16470-00	RES 0603 CHIP 470K 1/16W +-5%
R574		038-12100-00	RES 0603 CHIP 10E 1/16W +-5%	R669		036-14180-00	RES M/F 0805 CHIP 1K8 5%
R575		038-15100-00	RES 0603 CHIP 10K 1/16W +-5%	R670		038-15100-00	RES 0603 CHIP 10K 1/16W +-5%
R578		038-16100-00	RES 0603 CHIP 100K 1/16W +-5%	R671		038-14470-00	RES 0603 CHIP 4K7 1/16W +-5%
R579		038-14100-00	RES 0603 CHIP 1K0 1/16W +-5%	R672		038-15100-00	RES 0603 CHIP 10K 1/16W +-5%
R580		036-18100-00	RES M/F 0805 CHIP 10M 10%	R673		038-15100-00	RES 0603 CHIP 10K 1/16W +-5%
R581		036-15220-00	RES M/F 0805 CHIP 22K 5%	R674		038-15100-00	RES 0603 CHIP 10K 1/16W +-5%
R582		038-16220-00	RES 0603 CHIP 220K 1/16W +-5%	R675		038-15470-00	RES 0603 CHIP 47K 1/16W +-5%
R583		038-14100-00	RES 0603 CHIP 1K0 1/16W +-5%	R676		038-15470-00	RES 0603 CHIP 47K 1/16W +-5%
R584		038-15150-00	RES 0603 CHIP 15K 1/16W +-5%	R677		038-15100-00	RES 0603 CHIP 10K 1/16W +-5%
R585		036-13680-00	RES M/F 0805 CHIP 680E 5%	R678		038-16100-00	RES 0603 CHIP 100K 1/16W +-5%
R586		036-13680-00	RES M/F 0805 CHIP 680E 5%	R679		038-15470-00	RES 0603 CHIP 47K 1/16W +-5%
R592		038-16100-00	RES 0603 CHIP 100K 1/16W +-5%	R680		036-14270-00	RES M/F 0805 CHIP 2K7 5%
R593		038-16100-00	RES 0603 CHIP 100K 1/16W +-5%	R681		038-15100-00	RES 0603 CHIP 10K 1/16W +-5%
#R595		038-15100-00	RES 0603 CHIP 10K 1/16W +-5%	R682		036-14180-00	RES M/F 0805 CHIP 1K8 5%
R595		038-16100-00	RES 0603 CHIP 100K 1/16W +-5%	R683		038-15100-00	RES 0603 CHIP 10K 1/16W +-5%
#R596		036-15390-00	RES M/F 0805 CHIP 39K 5%	R684		036-13680-00	RES M/F 0805 CHIP 680E 5%
R599		038-10000-00	RES 0603 CHIP ZERO OHM 1/16W +-5%	R685		038-10000-00	RES 0603 CHIP ZERO OHM 1/16W +-5%
R600		038-14220-00	RES 0603 CHIP 2K2 1/16W +-5%	R686		038-15470-00	RES 0603 CHIP 47K 1/16W +-5%
R601		036-15820-00	RES M/F 0805 CHIP 82K 5%	R687		038-15100-00	RES 0603 CHIP 10K 1/16W +-5%
R602		036-14820-00	RES M/F 0805 CHIP 8K2 5%	R688		038-15100-00	RES 0603 CHIP 10K 1/16W +-5%
R603		038-16100-00	RES 0603 CHIP 100K 1/16W +-5%	R689		036-15220-00	RES M/F 0805 CHIP 22K 5%
R604		038-16220-00	RES 0603 CHIP 220K 1/16W +-5%	R690		036-15220-00	RES M/F 0805 CHIP 22K 5%
R605		038-16220-00	RES 0603 CHIP 220K 1/16W +-5%	R691		038-14220-00	RES 0603 CHIP 2K2 1/16W +-5%
R606		038-17100-00	RES 0603 CHIP 1M 1/16W +-5%	R692		036-15220-00	RES M/F 0805 CHIP 22K 5%
R607		038-16100-00	RES 0603 CHIP 100K 1/16W +-5%	R693		038-14100-00	RES 0603 CHIP 1K0 1/16W +-5%
R608		036-15220-00	RES M/F 0805 CHIP 22K 5%	R694		038-14100-00	RES 0603 CHIP 1K0 1/16W +-5%
R609		038-16220-00	RES 0603 CHIP 220K 1/16W +-5%	R695		038-14100-00	RES 0603 CHIP 1K0 1/16W +-5%
R610		038-14470-00	RES 0603 CHIP 4K7 1/16W +-5%	R696		038-14100-00	RES 0603 CHIP 1K0 1/16W +-5%
R611		038-16220-00	RES 0603 CHIP 220K 1/16W +-5%	R697		038-14100-00	RES 0603 CHIP 1K0 1/16W +-5%
R612		038-13220-00	RES 0603 CHIP 220E 1/16W +-5%	R698		038-14100-00	RES 0603 CHIP 1K0 1/16W +-5%
R613		038-16100-00	RES 0603 CHIP 100K 1/16W +-5%	R699		038-14100-00	RES 0603 CHIP 1K0 1/16W +-5%
R614		038-16220-00	RES 0603 CHIP 220K 1/16W +-5%	R700		038-15100-00	RES 0603 CHIP 10K 1/16W +-5%
R615		038-14220-00	RES 0603 CHIP 2K2 1/16W +-5%	R701		038-15100-00	RES 0603 CHIP 10K 1/16W +-5%
R616		038-14220-00	RES 0603 CHIP 2K2 1/16W +-5%	R702		038-15100-00	RES 0603 CHIP 10K 1/16W +-5%
R617		038-14680-00	RES 0603 CHIP 6K8 1/16W +-5%	R703		038-15100-00	RES 0603 CHIP 10K 1/16W +-5%

Ref	Var	IPN	Description	Ref	Var	IPN	Description
R704		038-15100-00	RES 0603 CHIP 10K 1/16W +-5%				
R705		038-15100-00	RES 0603 CHIP 10K 1/16W +-5%				
R706		038-15100-00	RES 0603 CHIP 10K 1/16W +-5%				
R707		038-15100-00	RES 0603 CHIP 10K 1/16W +-5%				
R708		038-10000-00	RES 0603 CHIP ZERO OHM 1/16W +-5%				
#R710		038-10000-00	RES 0603 CHIP ZERO OHM 1/16W +-5%				
#R712		038-10000-00	RES 0603 CHIP ZERO OHM 1/16W +-5%				
#R713		038-10000-00	RES 0603 CHIP ZERO OHM 1/16W +-5%				
#R714		038-10000-00	RES 0603 CHIP ZERO OHM 1/16W +-5%				
R720		038-10000-00	RES 0603 CHIP ZERO OHM 1/16W +-5%				
R721		038-15470-00	RES 0603 CHIP 47K 1/16W +-5%				
#R722		036-16330-00	RES M/F 0805 CHIP 330K 5%				
#R723		038-16220-00	RES 0603 CHIP 220K 1/16W +-5%				
R724		038-15270-00	RES 0603 CHIP 27K 1/16W +-5%				
R725		038-15100-00	RES 0603 CHIP 10K 1/16W +-5%				
R726		038-15270-00	RES 0603 CHIP 27K 1/16W +-5%				
R727		038-15470-00	RES 0603 CHIP 47K 1/16W +-5%				
#SPEC1		038-10000-00	RES 0603 CHIP ZERO OHM 1/16W +-5%				
S1		240-10000-07	CONN SMD SKT 16WAY 2ROW MICROMATCH				
S2		240-10000-06	CONN SMD SKT 12WAY 2ROW MICROMATCH				
S8		240-10000-07	CONN SMD SKT 16WAY 2ROW MICROMATCH				
S13		240-10000-06	CONN SMD SKT 12WAY 2ROW MICROMATCH				
S14		240-10000-07	CONN SMD SKT 16WAY 2ROW MICROMATCH				
S15		240-10000-07	CONN SMD SKT 16WAY 2ROW MICROMATCH				
SK505		240-04020-42	SKT 44 PIN SMD PLCC CHIP CARRIER				
TP614		005-10000-10	TEST POINT SMD 0805 2.0 X 1.25 X 1.45				
X501		274-01070-00	XTAL 4.000MHZ HC49U/S C/W TEFLON INSULAT				

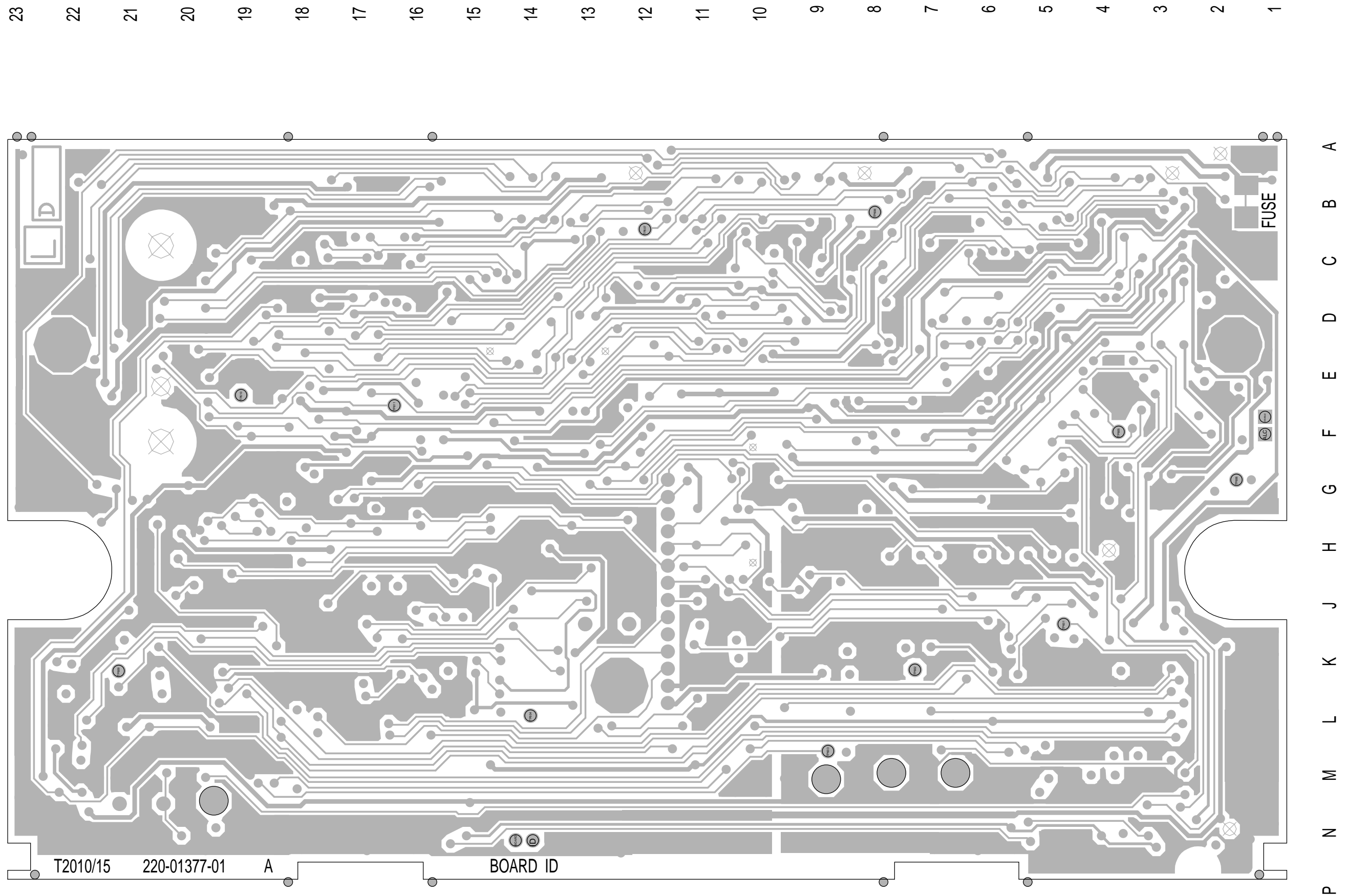
T2010 & T2015 HC05 Logic Mechanical & Miscellaneous Parts

IPN	Description	IPN	Description
219-02584-00	CABLE ASSEMBLY T2000 PWR CABLE		
220-01377-01	(L) PCB T2010/15 LOGIC HC05 COMMON PLATFOR		
240-00020-11	PLUG MICROPHONE BT SR937		
240-00100-13	PLUG COAX BNC CORD MTG CRIMP URM76		
240-02010-75	SKT RECEPTL SML 172775-1		
240-04021-63	CONN 2WAY 24AWG (BLACK) INLINE HERMAPHRODITIC PACK LOOSE IN INSTALLATION KIT		
252-00010-37	MIC AWC DYNAMIC 600E 6WAY M095D TINSEL SHLD'D		
252-00010-49	MIC CLIP (SPRING STEEL CONTACT)		
265-00010-60	FUSE 10A 12V AUTOMOTIVE STAPLE TYPE		
303-23134-02	COVER TOP A1M2504 T2000 PNTD CMLPT		
303-30062-02	CRADLE BODY A3M2551 T2000 BOTTOM		
303-30063-02	CRADLE BODY A3M2552 T2000 TOP		
303-30064-00	CRADLE CLIP A1M2550 T2000		
303-30065-01	KEY A3M2553 CRADLE T2000		
340-00010-23	FUSEHLDR INLINE 3M 972		
349-00010-49	SCREW SELFTAP NO 10X1/2 IN TYPE AB PAN POZI BZ		
349-00020-32	SCREW TAPTITE M3X8MM PAN POZI BZ		
353-00010-32	WASHER M5 SHAKEPROOF EXT BZ		
360-02003-01	GROMMET MIC CORD T2000 SII		
365-00100-09	LABEL WHITE VINYL 15X11MM S/A		
365-01376-00	LABEL A4A724 SOFTWARE		
365-01391-01	(L)LABEL BLNK 30*10.8MM TAMPERMARK VOID MA		
369-00020-46	TAPE 6 X 6MM FOAM 1 SIDE S/A		
399-00010-52	BAG PLASTIC 100*150MM		
410-01099-01	(L) PKG CARTON T2000 SERIES II		
410-01101-00	CARTON T700/T2000 OUTER (5 UNIT EA)		
410-01117-01	INSERT ADDENDUM FOR T2010/30 OPER MANL		
429-20000-04	INSTLN GDE T2000		
459-20100-02	USER GUIDE T2010/15 SII		

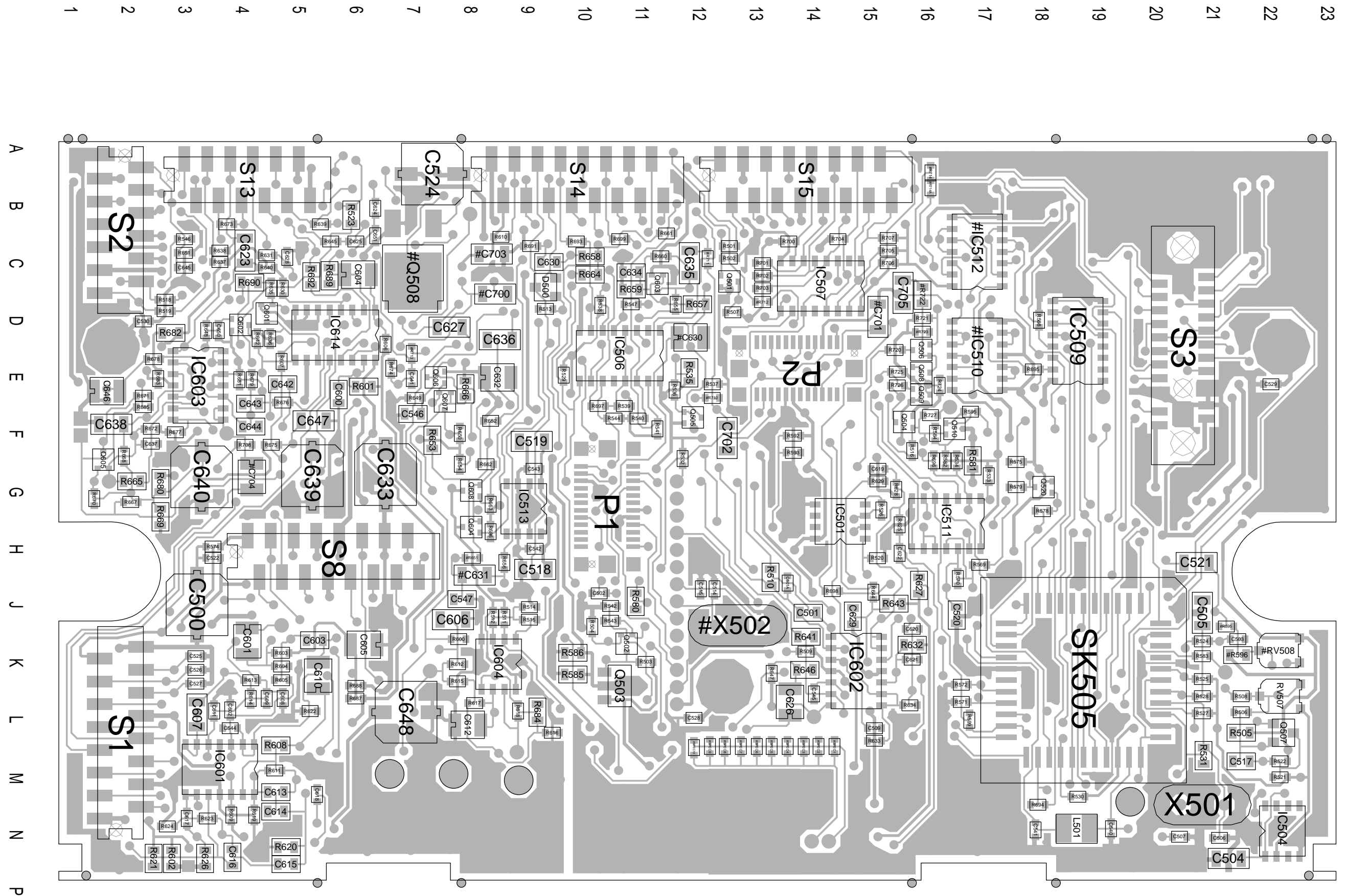
T2010 & T1015 HC05 Logic Grid Reference Index (IPN 220-01377-01)

Device	PCB	Circuit	Device	PCB	Circuit	Device	PCB	Circuit	Device	PCB	Circuit
ALC	2:F1	1-V0	C628	1:C4	1-M0		1:K14	1-H0	R526	1:G15	1-F8
			C629	1:J14	1-N0	IC603	1:E3	1-P0	R527	1:L20	1-G9
BOARD	2:N14	1-T4	C630	1:C9	1-T1		1:E3	1-A2	R528	1:L20	1-H8
			#C630	1:D11	1-S1		1:E3	1-R0	R529	1:E9	1-F8
C500	1:J3	1-B6	#C631	1:J8	1-S2		1:E3	1-V1	R530	1:M18	1-I8
C501	1:J13	1-C8	C632	1:E8	1-T2		1:E3	1-U3	R531	1:M20	1-G6
C501A	1:J13	1-C8	C633	1:G6	1-U2	IC604	1:K8	1-V3	R532	1:G11	1-J7
C502	1:J10	1-B3	C634	1:C10	1-U1		1:K8	1-C5	R533	1:G17	1-I5
C503	1:K21	1-E5	C635	1:C11	1-U2		1:K8	1-H2	R534	1:G16	1-I5
C504	1:P21	1-H9	C636	1:D8	1-V1	IC614	1:D5	1-C1	R535	1:E11	1-K4
C505	1:J20	1-H8	C637	1:F2	1-U1		1:D5	1-N1	R536	1:E11	1-K4
C506	1:N21	1-G6	C638	1:F1	1-V0		1:D5	1-M0	R537	1:E12	1-K4
C507	1:N20	1-H6	C639	1:G5	1-V0		1:D5	1-J1	R538	1:D10	1-L5
C509	1:L15	1-C7	C640	1:G3	1-U0	ID	2:N13	1-T4	R539	1:F10	1-L5
C514	1:J12	1-I6	C641	1:E6	1-S0				R540	1:F10	1-L5
C515	1:J12	1-J6	C642	1:E4	1-R1	L501	1:N18	1-I4	R541	1:F11	1-M5
C517	1:M21	1-D8	C643	1:F4	1-Q0				R542	1:J10	1-E9
C518	1:H9	1-A6	C644	1:F4	1-Q0	P1	1:G10	1-U9	R543	1:J10	1-D9
C519	1:F9	1-B7	C645	1:C3	1-B9	P2	1:E13	1-U8	R544	1:F10	1-Q7
C520	1:J16	1-H5	C646	1:E1	1-Q0				R546	1:C3	1-Q4
C521	1:H20	1-H5	C647	1:F5	1-S0	Q501	1:C12	1-C9	R547	1:D10	1-L5
C522	1:H3	1-B6	C648	1:L6	1-C0	Q502	1:K10	1-D9	R568	1:D17	1-L7
C524	1:B7	1-B8	C650	1:D3	1-L1	Q503	1:K10	1-D9	R569	1:H16	1-G5
C525	1:K3	1-E5	C651	1:C6	1-N1	Q504	1:F15	1-D6	R570	1:J16	1-G5
C526	1:K3	1-E5	#C700	1:D8	1-L1	Q505	1:F11	1-K4	R571	1:L16	1-I6
C527	1:K3	1-F5	#C701	1:D15	1-P3	Q506	1:E15	1-C6	R572	1:K16	1-I6
C528	1:L11	1-S9	C702	1:F12	1-R1	Q507	1:L22	1-D7	R574	1:H3	1-B6
C529	1:E22	1-S9	#C703	1:C8	1-V5	Q508	1:E15	1-C6	R575	1:G17	1-E6
C530	1:D2	1-T9	#C704	1:G4	1-P1	#Q508	1:C7	1-J4	R578	1:G18	1-F6
C540	1:N19	1-I4	C705	1:D15	1-C6	Q509	1:E15	1-D6	R579	1:G17	1-E6
C541	1:N17	1-I4				Q510	1:F16	1-E6	R580	1:J10	1-J6
C542	1:H9	1-A6	D500	1:D9	1-K3	Q520	1:G18	1-E6	R581	1:G16	1-E7
C543	1:G9	1-B6	DISABLE	2:F1	1-U0	Q601	1:D4	1-J1	R582	1:G16	1-E7
C544	1:L3	1-B0				Q602	1:D3	1-M1	R583	1:K20	1-G9
C545	1:L14	1-N0	IC501	1:H14	1-E8	Q603	1:C11	1-U1	R584	1:F16	1-E6
C546	1:F7	1-V1	#IC503	1:J11	1-I6	Q604	1:H8	1-W2	R585	1:K9	1-C8
C547	1:J7	1-S1	IC504	1:N22	1-H9	Q605	1:G1	1-T0	R586	1:K9	1-D8
C600	1:E5	1-C1	IC506	1:E10	1-M4	Q606	1:E7	1-W1	R592	1:F13	1-H5
C601	1:K4	1-B1	IC507	1:C14	1-O4	Q607	1:F7	1-W0	R593	1:F13	1-H4
C602	1:L3	1-B0	IC509	1:D18	1-L7	Q608	1:G8	1-W2	R595	1:F16	1-E6
C603	1:K5	1-C1	#IC510	1:E16	1-W5				#R595	1:J21	1-G5
C604	1:C6	1-B2		1:E16	1-O3	R501	1:C12	1-B9	#R596	1:K21	1-G4
C605	1:K6	1-B0		1:E16	1-O2	R502	1:C12	1-C9	R599	1:L16	1-I6
C606	1:J7	1-C2		1:E16	1-V6	R503	1:K11	1-D9	R600	1:K7	1-B2
C607	1:L3	1-E2		1:E16	1-V6	R504	1:J10	1-D8	R601	1:E6	1-B1
C608	1:L4	1-D1	IC511	1:H16	1-V3	R505	1:L21	1-D7	R602	1:P2	1-D0
C609	1:L4	1-E1		1:H16	1-N5	R506	1:L21	1-D7	R603	1:K4	1-B0
C610	1:K5	1-D0		1:H16	1-I5	R507	1:D12	1-C9	R604	1:K4	1-B0
C611	1:L3	1-E1		1:H16	1-J4	R508	1:L21	1-D7	R605	1:K4	1-B0
C612	1:L7	1-G1		1:H16	1-G5	R509	1:K13	1-B7	R606	1:E6	1-B1
C613	1:M4	1-E0	#IC512	1:C16	1-M2	R510	1:J13	1-C8	R607	1:E4	1-D1
C614	1:N4	1-E0		1:C16	1-V5	R511	1:J8	1-B6	R608	1:M4	1-D0
C615	1:P4	1-F0		1:C16	1-L2	R512	1:J8	1-C6	R609	1:N3	1-D0
C616	1:N3	1-F0		1:C16	1-L3	R513	1:D9	1-K3	R610	1:C8	1-F4
C617	1:N3	1-G0		1:C16	1-K3	R514	1:J9	1-C4	R611	1:M4	1-D1
C618	1:M5	1-H0	IC513	1:G8	1-A7	R515	1:J9	1-C5	R612	1:K7	1-D2
C619	1:G15	1-I0	IC601	1:M3	1-E0	R516	1:F15	1-D6	R613	1:K4	1-D1
C620	1:J15	1-J0		1:M3	1-T3	R518	1:D2	1-B7	R614	1:L4	1-E1
C621	1:K15	1-J0		1:M3	1-G0	R519	1:D2	1-B7	R615	1:K7	1-G2
C622	1:H15	1-H0		1:M3	1-F1	R520	1:H15	1-E7	R616	1:L9	1-G1
C623	1:C4	1-L0		1:M3	1-C0	R521	1:M22	1-D8	R617	1:L8	1-G2
C624	1:B6	1-N1	IC602	1:K14	1-C7	R522	1:M22	1-D8	R618	1:L8	1-H1
C625	1:C6	1-N1		1:K14	1-T3	R523	1:B5	1-D4	R619	1:N4	1-E0
C626	1:L13	1-O0		1:K14	1-O0	R524	1:K20	1-E5	R620	1:N4	1-F0
C627	1:D7	1-M0		1:K14	1-K0	R525	1:K20	1-G8	R621	1:P2	1-F0

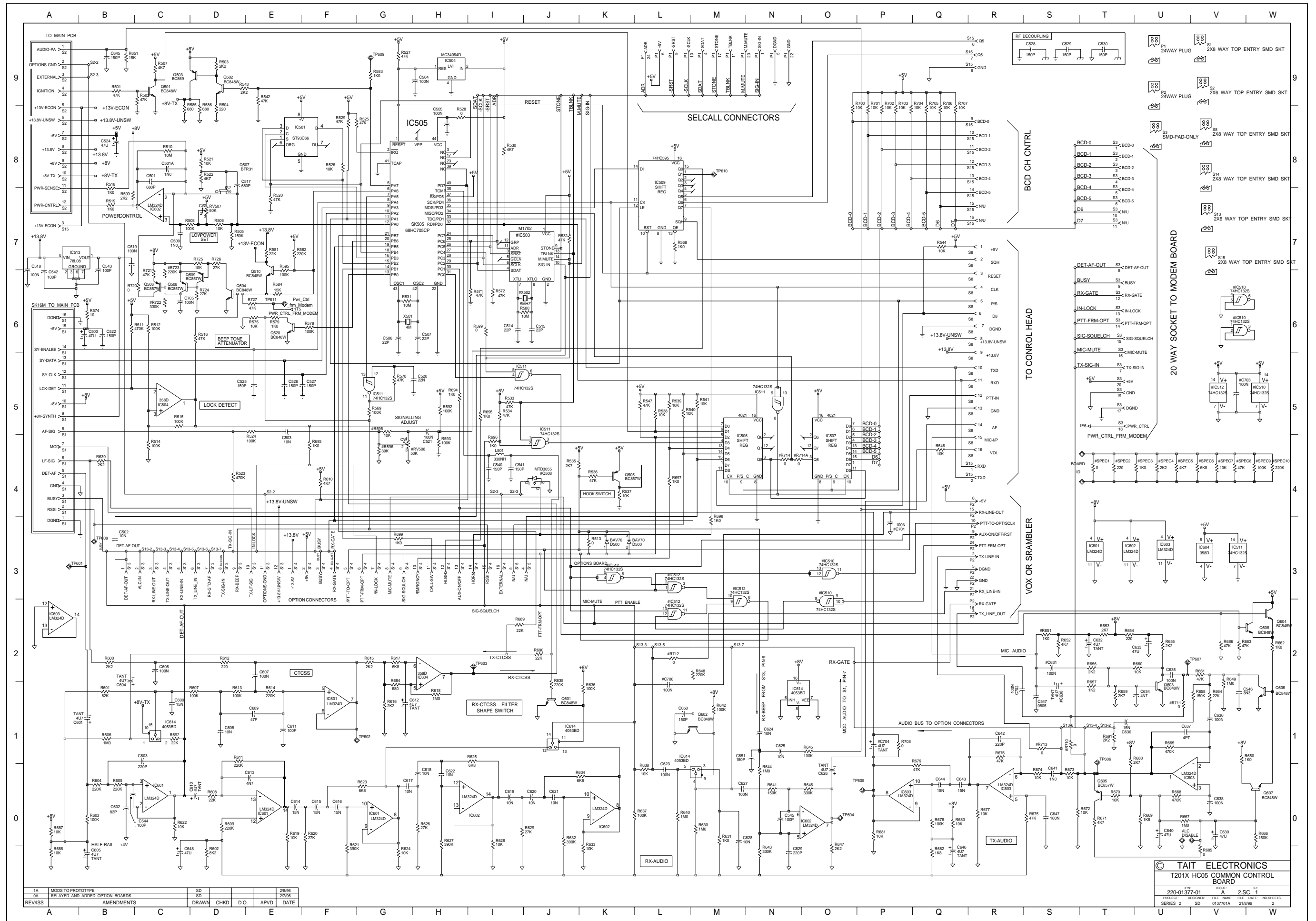
Device	PCB	Circuit	Device	PCB	Circuit	Device	PCB	Circuit	Device	PCB	Circuit
R622	1:L5	1-C0	R690	1:C4	1-J2						
R623	1:N3	1-G0	R691	1:C9	1-T1						
R624	1:N2	1-G0	R692	1:C5	1-C1						
R625	1:H15	1-I1	R693	1:C9	1-F4						
R626	1:P3	1-H0	R694	1:N17	1-H5						
R627	1:J15	1-H0	R695	1:E17	1-I5						
R628	1:G15	1-I0	R696	1:G16	1-I4						
R629	1:G15	1-I0	R697	1:F10	1-L4						
R630	1:D4	1-M0	R698	1:J14	1-M3						
R631	1:C4	1-M0	R699	1:C10	1-G3						
R632	1:K15	1-J0	R700	1:C13	1-O8						
R633	1:L15	1-K0	R701	1:C13	1-P8						
R634	1:L15	1-K0	R702	1:C13	1-P8						
R635	1:D4	1-J1	R703	1:D13	1-P8						
R636	1:D4	1-K1	R704	1:C14	1-P8						
R637	1:C3	1-L0	R705	1:C15	1-Q8						
R638	1:C3	1-L0	R706	1:C15	1-Q8						
R639	1:B5	1-B4	R707	1:C15	1-Q8						
R640	1:C4	1-L0	#R710	1:E12	1-S1						
R641	1:K13	1-N0	#R711	1:C12	1-U1						
R642	1:D4	1-M1	#R712	1:D13	1-L2						
R643	1:J15	1-N0	#R713	1:E6	1-S1						
R644	1:J15	1-N0	#R714	1:B16	1-N4						
R645	1:C5	1-O1	#R714A	1:B16	1-N4						
R646	1:K13	1-O0	R708	1:F4	1-P1						
R647	1:K13	1-O0	R720	1:E15	1-C6						
R648	1:D3	1-M2	R721	1:D15	1-C6						
R649	1:E7	1-V1	#R722	1:D15	1-C6						
R650	1:F7	1-V1	#R723	1:D15	1-C6						
R651	1:C3	1-B9	R724	1:E16	1-D6						
#R651	1:H8	1-S2	R725	1:E15	1-D7						
R652	1:F8	1-S2	R726	1:E15	1-D7						
R653	1:F7	1-T2	R727	1:F16	1-E6						
R654	1:G7	1-T2	RV507	1:L22	1-D7						
R655	1:D11	1-U2	#RV508	1:K22	1-G4						
R656	1:H8	1-T2									
R657	1:D11	1-T1	S1	1:L1	1-V9						
R658	1:C10	1-V1	S13	1:B4	1-V7						
R659	1:D10	1-T1	S14	1:B9	1-V7						
R660	1:C11	1-U2	S15	1:B13	1-V6						
R661	1:C11	1-V2	S2	1:B1	1-V9						
R662	1:G8	1-W2	S3	1:E20	1-U8						
R663	1:G8	1-V2	#SPEC1	1:M14	1-T4						
R664	1:C10	1-V1	#SPEC2	1:M14	1-T4						
R665	1:G2	1-U1	#SPEC3	1:M13	1-U4						
R666	1:E7	1-W0	#SPEC4	1:M13	1-U4						
R667	1:G2	1-U0	#SPEC5	1:M13	1-U4						
R668	1:F1	1-U0	#SPEC6	1:M13	1-V4						
R669	1:H2	1-U0	#SPEC7	1:M12	1-V4						
R670	1:G1	1-T0	#SPEC8	1:M12	1-V4						
R671	1:E2	1-T0	#SPEC9	1:M12	1-W4						
R672	1:F2	1-S0	#SPEC10	1:M11	1-W4						
R673	1:B3	1-S0	S8	1:H5	1-V8						
R674	1:E6	1-S0	SK505	1:K18	1-G6						
R675	1:F4	1-S0									
R676	1:F4	1-R1	TP601	2:J4	1-A3						
R677	1:F2	1-R0	TP602	2:K7	1-G1						
R678	1:E2	1-Q0	TP603	2:M8	1-I2						
R679	1:E4	1-Q0	TP604	2:L14	1-O0						
R680	1:G2	1-T1	TP605	2:F3	1-P0						
R681	1:E3	1-P0	TP606	2:G1	1-T1						
R682	1:D2	1-Q0	TP607	2:C12	1-U2						
R683	1:E2	1-Q0	TP608	2:B8	1-B3						
R684	1:L9	1-G1	TP609	2:K21	1-G9						
R685	1:F2	1-V0	TP610	2:E19	1-M8						
R686	1:H8	1-V2	TP611	2:F16	1-E6						
R687	1:L6	1-A0									
R688	1:K6	1-A0	X501	1:N20	1-G6						
R689	1:C5	1-I2	#X502	1:J12	1-J6						



T2010 & T2015 HC05 Logic PCB Layout
Bottom Side
IPN 220-01377-01



T2010 & T2015 HC05 Logic PCB Layout
Top Side
IPN 220-01377-01



1A	MODS TO PROTOTYPE	SD	2/8/96
0A	RELATED AND ADDED OPTION BOARDS	SD	2/7/96
REVISION	AMENDMENTS	DRAWN	CHKD
		D.O.	APVD
			DATE

TAIT ELECTRONICS
 T201X HC05 COMMON CONTROL BOARD
 IPN 220-01377-01 A 2 SC. 1
 PROJECT DESIGNER FILE NAME DATE NO SHEETS
 SERIES 2 SD 0137701A 2/8/96 2

7.10 T2010 & T2015 HC05 Logic PCB

T2010 & T2015 HC05 Logic Parts List (IPN 220-01377-02)

Parts List Amendments

Ref	Var	IPN	Description	Ref	Var	IPN	Description
C500		016-08470-01	CAP ELECT SMD 6X4MM 47M 16V	C634		015-24470-08	CAP CER 0805 CHIP 4N7 10% X7R 50V
C501		015-23680-08	CAP CER 0805 CHIP 680P 10% X7R 50V	C635		015-06100-08	CAP CER 1206 CHIP 100N 10% X7R 50V
C501A		018-14100-00	CAP 0603 CHIP 1N 50V X7R +-10%	C636		015-06100-08	CAP CER 1206 CHIP 100N 10% X7R 50V
C502		018-15100-00	CAP 0603 CHIP 10N 50V X7R +-10%	C637		018-11470-00	CAP 0603 CHIP 4P7 50V NPO +-0.25P
C503		018-15100-00	CAP 0603 CHIP 10N 50V X7R +-10%	C638		015-06100-08	CAP CER 1206 CHIP 100N 10% X7R 50V
C504		015-06100-08	CAP CER 1206 CHIP 100N 10% X7R 50V	C639		016-08470-01	CAP ELECT SMD 6X4MM 47M 16V
C505		015-06100-08	CAP CER 1206 CHIP 100N 10% X7R 50V	C640		016-08470-01	CAP ELECT SMD 6X4MM 47M 16V
C506		018-12220-00	CAP 0603 CHIP 22P 50V NPO +-5%	C641		018-14100-00	CAP 0603 CHIP 1N 50V X7R +-10%
C507		018-12220-00	CAP 0603 CHIP 22P 50V NPO +-5%	C642		015-23220-01	CAP CER 0805 CHIP 220P 5% NPO 50V
C509		018-14100-00	CAP 0603 CHIP 1N 50V X7R +-10%	C643		015-25150-08	CAP CER 0805 CHIP 15N 10% X7R 50V
C514		018-12220-00	CAP 0603 CHIP 22P 50V NPO +-5%	C644		015-25150-08	CAP CER 0805 CHIP 15N 10% X7R 50V
C515		018-12220-00	CAP 0603 CHIP 22P 50V NPO +-5%	C645		018-13150-00	CAP 0603 CHIP 150P 50V NPO +-5%
C517		015-23680-08	CAP CER 0805 CHIP 680P 10% X7R 50V	C646		014-07470-00	CAP TANT CHIP 4U7 'B' CASE 16V +-10% 267
C518		015-06100-08	CAP CER 1206 CHIP 100N 10% X7R 50V	C647		015-06100-08	CAP CER 1206 CHIP 100N 10% X7R 50V
C519		018-13150-00	CAP 0603 CHIP 150P 50V NPO +-5%	C648		016-08470-01	CAP ELECT SMD 6X4MM 47M 16V
C520		015-25220-08	CAP CER 0805 CHIP 22N 10% X7R 50V	C650		018-13150-00	CAP 0603 CHIP 150P 50V NPO +-5%
C521		015-06100-08	CAP CER 1206 CHIP 100N 10% X7R 50V	C651		018-13150-00	CAP 0603 CHIP 150P 50V NPO +-5%
C522		018-13150-00	CAP 0603 CHIP 150P 50V NPO +-5%	#C700		015-06100-08	CAP CER 1206 CHIP 100N 10% X7R 50V
C524		016-08470-01	CAP ELECT SMD 6X4MM 47M 16V	C702		015-06100-08	CAP CER 1206 CHIP 100N 10% X7R 50V
C525		018-13150-00	CAP 0603 CHIP 150P 50V NPO +-5%	#C703		015-06100-08	CAP CER 1206 CHIP 100N 10% X7R 50V
C526		018-13150-00	CAP 0603 CHIP 150P 50V NPO +-5%	C705		015-06100-08	CAP CER 1206 CHIP 100N 10% X7R 50V
C527		018-13150-00	CAP 0603 CHIP 150P 50V NPO +-5%	#C730		014-07470-00	CAP TANT CHIP 4U7 'B' CASE 16V +-10% 26
C528		018-13150-00	CAP 0603 CHIP 150P 50V NPO +-5%	D500		001-10000-70	(S) DIODE SMD BAV70 DUAL SWITCH SOT-23 C
C530		018-13150-00	CAP 0603 CHIP 150P 50V NPO +-5%	IC501		002-10936-60	(LS) IC SMD ST93C66CM6 4K EEPROM SER MI
C540		018-13150-00	CAP 0603 CHIP 150P 50V NPO +-5%	IC504		002-10340-64	(S) IC SMD MC34064 LO VOLT SENSE
C541		018-13150-00	CAP 0603 CHIP 150P 50V NPO +-5%	IC505		002-26870-55	(LSH) IC 68HC705C9 MPU (T201X 2.05) MAS
C542		018-13100-00	CAP 0603 CHIP 100P 50V NPO +-5%	IC506		002-10140-21	(S) IC MC14021BDR2 8BIT SHIFT REGSTR SO
C543		018-13100-00	CAP 0603 CHIP 100P 50V NPO +-5%	IC507		002-10140-21	(S) IC MC14021BDR2 8BIT SHIFT REGSTR.SO
C544		018-13100-00	CAP 0603 CHIP 100P 50V NPO +-5%	IC509		002-74905-95	(S) IC SMD 74HC595 SHIFT REGISTER
C545		018-13100-00	CAP 0603 CHIP 100P 50V NPO +-5%	#IC510		002-74901-32	(S) IC SMD 74HC132 HCMOS QUAD SCHMT SO
C546		015-24330-08	CAP CER 0805 CHIP 3N3 10% X7R 50V	IC511		002-74901-32	(S) IC SMD 74HC132 HCMOS QUAD SCHMT SO-
C600		015-25150-08	CAP CER 0805 CHIP 15N 10% X7R 50V	IC513		002-10078-08	(S) IC SMD 78L08 8V REG SO8
C601		014-07470-00	CAP TANT CHIP 4U7 'B' CASE 16V +-10% 267	IC601		002-10003-24	(S) IC SMD 324 QUAD OP AMP SO14
C602		018-12820-00	CAP 0603 CHIP 82P 50V NPO +-5%	IC602		002-10003-24	(S) IC SMD 324 QUAD OP AMP SO14
C603		015-23220-01	CAP CER 0805 CHIP 220P 5% NPO 50V	IC603		002-10003-24	(S) IC SMD 324 QUAD OP AMP SO14
C604		014-07470-00	CAP TANT CHIP 4U7 'B' CASE 16V +-10% 267	IC604		002-10003-58	(S) IC SMD LM358 DUAL OP AMP
C605		014-07470-00	CAP TANT CHIP 4U7 'B' CASE 16V +-10% 267	IC614		002-10040-53	(S) IC 4053 SMD TRIPLE 2CH MULTI-PLEXR
C606		015-06100-08	CAP CER 1206 CHIP 100N 10% X7R 50V	L501		056-10330-02	(L) IND SMD 330NH SIEMENS SMID02
C607		015-06100-08	CAP CER 1206 CHIP 100N 10% X7R 50V	P1		240-10000-01	CONN SMD 24WAY (PLUG)
C608		018-15100-00	CAP 0603 CHIP 10N 50V X7R +-10%	P2		240-10000-01	CONN SMD 24WAY (PLUG)
C609		018-12470-00	CAP 0603 CHIP 47P 50V NPO +-5%	Q501		000-10084-81	(S) XSTR SMD BC848BW NPN SOT-323 SMALL S
C610		014-07470-00	CAP TANT CHIP 4U7 'B' CASE 16V +-10% 267	Q502		000-10084-81	(S) XSTR SMD BC848BW NPN SOT-323 SMALL S
C611		018-13100-00	CAP 0603 CHIP 100P 50V NPO +-5%	Q503		000-10008-69	(S) XSTR SMD BC869 PNP 1W 2A SOT-89
C612		014-07470-00	CAP TANT CHIP 4U7 'B' CASE 16V +-10% 267	Q504		000-10084-81	(S) XSTR SMD BC848BW NPN SOT-323 SMALL S
C613		015-24470-08	CAP CER 0805 CHIP 4N7 10% X7R 50V	Q505		000-10085-71	(S) XSTR SMD BC857BW PNP SOT-323 SMALL S
C614		015-25150-08	CAP CER 0805 CHIP 15N 10% X7R 50V	Q506		000-10085-71	(S) XSTR SMD BC857BW PNP SOT-323 SMALL S
C615		015-25150-08	CAP CER 0805 CHIP 15N 10% X7R 50V	Q507		000-10003-12	(S) XSTR SMD BFR31 N JFET SOT-23
C616		015-25150-08	CAP CER 0805 CHIP 15N 10% X7R 50V	Q508		000-10085-71	(S) XSTR SMD BC857BW PNP SOT-323 SMALL S
C617		018-15100-00	CAP 0603 CHIP 10N 50V X7R +-10%	Q509		000-10085-71	(S) XSTR SMD BC857BW PNP SOT-323 SMALL S
C618		018-15100-00	CAP 0603 CHIP 10N 50V X7R +-10%	Q510		000-10084-81	(S) XSTR SMD BC848BW NPN SOT-323 SMALL S
C619		018-15100-00	CAP 0603 CHIP 10N 50V X7R +-10%	Q520		000-10084-81	(S) XSTR SMD BC848BW NPN SOT-323 SMALL S
C620		018-15100-00	CAP 0603 CHIP 10N 50V X7R +-10%	Q601		000-10084-81	(S) XSTR SMD BC848BW NPN SOT-323 SMALL S
C621		018-15100-00	CAP 0603 CHIP 10N 50V X7R +-10%	Q602		000-10084-81	(S) XSTR SMD BC848BW NPN SOT-323 SMALL S
C622		018-15100-00	CAP 0603 CHIP 10N 50V X7R +-10%	Q603		000-10084-81	(S) XSTR SMD BC848BW NPN SOT-323 SMALL S
C623		015-06100-08	CAP CER 1206 CHIP 100N 10% X7R 50V	Q604		000-10084-81	(S) XSTR SMD BC848BW NPN SOT-323 SMALL S
C624		018-15100-00	CAP 0603 CHIP 10N 50V X7R +-10%	Q605		000-10085-71	(S) XSTR SMD BC857BW PNP SOT-323 SMALL S
C625		018-15100-00	CAP 0603 CHIP 10N 50V X7R +-10%	Q606		000-10084-81	(S) XSTR SMD BC848BW NPN SOT-323 SMALL S
C626		014-07470-00	CAP TANT CHIP 4U7 'B' CASE 16V +-10% 267	Q607		000-10084-81	(S) XSTR SMD BC848BW NPN SOT-323 SMALL S
C627		015-06100-08	CAP CER 1206 CHIP 100N 10% X7R 50V	Q608		000-10084-81	(S) XSTR SMD BC848BW NPN SOT-323 SMALL S
C628		018-15100-00	CAP 0603 CHIP 10N 50V X7R +-10%				
C629		015-23220-01	CAP CER 0805 CHIP 220P 5% NPO 50V				
C630		015-25150-08	CAP CER 0805 CHIP 15N 10% X7R 50V				
C632		014-07470-00	CAP TANT CHIP 4U7 'B' CASE 16V +-10% 267				
C633		016-08470-01	CAP ELECT SMD 6X4MM 47M 16V				

Ref	Var	IPN	Description	Ref	Var	IPN	Description
R501		038-15470-00	RES 0603 CHIP 47K 1/16W +-5%	R619		038-15100-00	RES 0603 CHIP 10K 1/16W +-5%
R502		038-15470-00	RES 0603 CHIP 47K 1/16W +-5%	R620		036-15270-00	RES M/F 0805 CHIP 27K 5%
R503		038-14220-00	RES 0603 CHIP 2K2 1/16W +-5%	R621		036-16390-00	RES M/F 0805 CHIP 390K 5%
R504		038-13220-00	RES 0603 CHIP 220E 1/16W +-5%	R622		038-15100-00	RES 0603 CHIP 10K 1/16W +-5%
R505		036-16150-00	RES M/F 0805 CHIP 150K 5%	R623		038-14680-00	RES 0603 CHIP 6K8 1/16W +-5%
R506		038-15100-00	RES 0603 CHIP 10K 1/16W +-5%	R624		038-15100-00	RES 0603 CHIP 10K 1/16W +-5%
R507		038-14470-00	RES 0603 CHIP 4K7 1/16W +-5%	R625		038-14680-00	RES 0603 CHIP 6K8 1/16W +-5%
RV507		042-15500-01	RES PRESET SMD 50K +-25% 4X4.5X2.5MM 0.	R626		036-15270-00	RES M/F 0805 CHIP 27K 5%
R508		038-16100-00	RES 0603 CHIP 100K 1/16W +-5%	R627		036-16390-00	RES M/F 0805 CHIP 390K 5%
R509		038-14220-00	RES 0603 CHIP 2K2 1/16W +-5%	R628		038-15100-00	RES 0603 CHIP 10K 1/16W +-5%
R510		036-18100-00	RES M/F 0805 CHIP 10M 10%	R629		038-15270-00	RES 0603 CHIP 27K 1/16W +-5%
R511		038-16470-00	RES 0603 CHIP 470K 1/16W +-5%	R630		038-17100-00	RES 0603 CHIP 1M 1/16W +-5%
R512		038-16100-00	RES 0603 CHIP 100K 1/16W +-5%	R631		038-14100-00	RES 0603 CHIP 1K0 1/16W +-5%
R513		038-10000-00	RES 0603 CHIP ZERO OHM 1/16W +-5%	R632		036-16390-00	RES M/F 0805 CHIP 390K 5%
R514		038-16100-00	RES 0603 CHIP 100K 1/16W +-5%	R633		038-15100-00	RES 0603 CHIP 10K 1/16W +-5%
R515		038-16100-00	RES 0603 CHIP 100K 1/16W +-5%	R634		038-14680-00	RES 0603 CHIP 6K8 1/16W +-5%
R516		038-15470-00	RES 0603 CHIP 47K 1/16W +-5%	R635		038-16220-00	RES 0603 CHIP 220K 1/16W +-5%
R518		038-14100-00	RES 0603 CHIP 1K0 1/16W +-5%	R636		038-16100-00	RES 0603 CHIP 100K 1/16W +-5%
R519		038-14100-00	RES 0603 CHIP 1K0 1/16W +-5%	R637		038-16100-00	RES 0603 CHIP 100K 1/16W +-5%
R520		038-15470-00	RES 0603 CHIP 47K 1/16W +-5%	R638		038-15100-00	RES 0603 CHIP 10K 1/16W +-5%
R521		038-15100-00	RES 0603 CHIP 10K 1/16W +-5%	R639		038-14220-00	RES 0603 CHIP 2K2 1/16W +-5%
R522		038-14470-00	RES 0603 CHIP 4K7 1/16W +-5%	R640		038-17100-00	RES 0603 CHIP 1M 1/16W +-5%
R523		036-16470-00	RES M/F 0805 CHIP 470K 5%	R641		036-16150-00	RES M/F 0805 CHIP 150K 5%
R524		038-16100-00	RES 0603 CHIP 100K 1/16W +-5%	R642		038-16100-00	RES 0603 CHIP 100K 1/16W +-5%
R525		038-15470-00	RES 0603 CHIP 47K 1/16W +-5%	R643		036-16330-00	RES M/F 0805 CHIP 330K 5%
R526		038-15100-00	RES 0603 CHIP 10K 1/16W +-5%	R644		038-17100-00	RES 0603 CHIP 1M 1/16W +-5%
R527		038-15470-00	RES 0603 CHIP 47K 1/16W +-5%	R645		038-16100-00	RES 0603 CHIP 100K 1/16W +-5%
R528		038-10000-00	RES 0603 CHIP ZERO OHM 1/16W +-5%	R646		036-16330-00	RES M/F 0805 CHIP 330K 5%
R529		038-15470-00	RES 0603 CHIP 47K 1/16W +-5%	R647		038-14220-00	RES 0603 CHIP 2K2 1/16W +-5%
R530		038-14470-00	RES 0603 CHIP 4K7 1/16W +-5%	R648		038-16220-00	RES 0603 CHIP 220K 1/16W +-5%
R531		036-18100-00	RES M/F 0805 CHIP 10M 10%	R649		038-17100-00	RES 0603 CHIP 1M 1/16W +-5%
R532		038-15470-00	RES 0603 CHIP 47K 1/16W +-5%	R650		038-14100-00	RES 0603 CHIP 1K0 1/16W +-5%
R533		038-15470-00	RES 0603 CHIP 47K 1/16W +-5%	R651		038-15150-00	RES 0603 CHIP 15K 1/16W +-5%
R534		038-15470-00	RES 0603 CHIP 47K 1/16W +-5%	R652		038-14470-00	RES 0603 CHIP 4K7 1/16W +-5%
R535		036-14270-00	RES M/F 0805 CHIP 2K7 5%	R653		036-14270-00	RES M/F 0805 CHIP 2K7 5%
R536		038-15470-00	RES 0603 CHIP 47K 1/16W +-5%	R654		038-13220-00	RES 0603 CHIP 220E 1/16W +-5%
R537		038-15100-00	RES 0603 CHIP 10K 1/16W +-5%	R655		038-14220-00	RES 0603 CHIP 2K2 1/16W +-5%
R538		038-15100-00	RES 0603 CHIP 10K 1/16W +-5%	R656		038-14220-00	RES 0603 CHIP 2K2 1/16W +-5%
R539		038-15100-00	RES 0603 CHIP 10K 1/16W +-5%	R657		036-14120-00	RES M/F 0805 CHIP 1K2 5%
R540		038-15100-00	RES 0603 CHIP 10K 1/16W +-5%	R658		036-16150-00	RES M/F 0805 CHIP 150K 5%
R541		038-15100-00	RES 0603 CHIP 10K 1/16W +-5%	R659		036-14270-00	RES M/F 0805 CHIP 2K7 5%
R542		038-15470-00	RES 0603 CHIP 47K 1/16W +-5%	R660		038-15100-00	RES 0603 CHIP 10K 1/16W +-5%
R543		038-14220-00	RES 0603 CHIP 2K2 1/16W +-5%	R661		038-15470-00	RES 0603 CHIP 47K 1/16W +-5%
R544		038-15100-00	RES 0603 CHIP 10K 1/16W +-5%	R662		038-14100-00	RES 0603 CHIP 1K0 1/16W +-5%
R546		038-15100-00	RES 0603 CHIP 10K 1/16W +-5%	R663		038-15470-00	RES 0603 CHIP 47K 1/16W +-5%
R547		038-15470-00	RES 0603 CHIP 47K 1/16W +-5%	R664		036-15220-00	RES M/F 0805 CHIP 22K 5%
R568		038-14100-00	RES 0603 CHIP 1K0 1/16W +-5%	R665		036-16470-00	RES M/F 0805 CHIP 470K 5%
R569		038-16100-00	RES 0603 CHIP 100K 1/16W +-5%	R666		036-16150-00	RES M/F 0805 CHIP 150K 5%
R570		038-15470-00	RES 0603 CHIP 47K 1/16W +-5%	R667		038-17100-00	RES 0603 CHIP 1M 1/16W +-5%
R571		038-15470-00	RES 0603 CHIP 47K 1/16W +-5%	R668		038-16470-00	RES 0603 CHIP 470K 1/16W +-5%
R572		038-15470-00	RES 0603 CHIP 47K 1/16W +-5%	R669		036-14180-00	RES M/F 0805 CHIP 1K8 5%
R574		038-12100-00	RES 0603 CHIP 10E 1/16W +-5%	R670		038-15100-00	RES 0603 CHIP 10K 1/16W +-5%
R575		038-15100-00	RES 0603 CHIP 10K 1/16W +-5%	R671		038-14470-00	RES 0603 CHIP 4K7 1/16W +-5%
R578		038-16100-00	RES 0603 CHIP 100K 1/16W +-5%	R672		038-15100-00	RES 0603 CHIP 10K 1/16W +-5%
R579		038-14100-00	RES 0603 CHIP 1K0 1/16W +-5%	R673		038-15100-00	RES 0603 CHIP 10K 1/16W +-5%
R580		036-18100-00	RES M/F 0805 CHIP 10M 10%	R674		038-15100-00	RES 0603 CHIP 10K 1/16W +-5%
R581		036-15220-00	RES M/F 0805 CHIP 22K 5%	R675		038-15470-00	RES 0603 CHIP 47K 1/16W +-5%
R582		038-16220-00	RES 0603 CHIP 220K 1/16W +-5%	R676		038-15470-00	RES 0603 CHIP 47K 1/16W +-5%
R583		038-14100-00	RES 0603 CHIP 1K0 1/16W +-5%	R677		038-15100-00	RES 0603 CHIP 10K 1/16W +-5%
R584		038-15150-00	RES 0603 CHIP 15K 1/16W +-5%	R678		038-16100-00	RES 0603 CHIP 100K 1/16W +-5%
R585		036-13680-00	RES M/F 0805 CHIP 680E 5%	R679		038-15470-00	RES 0603 CHIP 47K 1/16W +-5%
R586		036-13680-00	RES M/F 0805 CHIP 680E 5%	R680		036-14270-00	RES M/F 0805 CHIP 2K7 5%
R592		038-16100-00	RES 0603 CHIP 100K 1/16W +-5%	R681		038-15100-00	RES 0603 CHIP 10K 1/16W +-5%
R593		038-16100-00	RES 0603 CHIP 100K 1/16W +-5%	R682		036-14180-00	RES M/F 0805 CHIP 1K8 5%
R595		038-16100-00	RES 0603 CHIP 100K 1/16W +-5%	R683		038-15100-00	RES 0603 CHIP 10K 1/16W +-5%
#R596		036-15390-00	RES M/F 0805 CHIP 39K 5%	R684		036-13680-00	RES M/F 0805 CHIP 680E 5%
R599		038-10000-00	RES 0603 CHIP ZERO OHM 1/16W +-5%	R685		038-10000-00	RES 0603 CHIP ZERO OHM 1/16W +-5%
R600		038-14220-00	RES 0603 CHIP 2K2 1/16W +-5%	R686		038-15470-00	RES 0603 CHIP 47K 1/16W +-5%
R601		036-15820-00	RES M/F 0805 CHIP 82K 5%	R687		038-15100-00	RES 0603 CHIP 10K 1/16W +-5%
R602		036-14820-00	RES M/F 0805 CHIP 8K2 5%	R688		038-15100-00	RES 0603 CHIP 10K 1/16W +-5%
R603		038-16100-00	RES 0603 CHIP 100K 1/16W +-5%	R689		036-15220-00	RES M/F 0805 CHIP 22K 5%
R604		038-16220-00	RES 0603 CHIP 220K 1/16W +-5%	R690		036-15220-00	RES M/F 0805 CHIP 22K 5%
R605		038-16220-00	RES 0603 CHIP 220K 1/16W +-5%	R691		038-14220-00	RES 0603 CHIP 2K2 1/16W +-5%
R606		038-17100-00	RES 0603 CHIP 1M 1/16W +-5%	R692		036-15220-00	RES M/F 0805 CHIP 22K 5%
R607		038-16100-00	RES 0603 CHIP 100K 1/16W +-5%	R693		038-14100-00	RES 0603 CHIP 1K0 1/16W +-5%
R608		036-15220-00	RES M/F 0805 CHIP 22K 5%	R694		038-14100-00	RES 0603 CHIP 1K0 1/16W +-5%
R609		038-16220-00	RES 0603 CHIP 220K 1/16W +-5%	R695		038-14100-00	RES 0603 CHIP 1K0 1/16W +-5%
R610		038-14470-00	RES 0603 CHIP 4K7 1/16W +-5%	R696		038-14100-00	RES 0603 CHIP 1K0 1/16W +-5%
R611		038-16220-00	RES 0603 CHIP 220K 1/16W +-5%	R697		038-14100-00	RES 0603 CHIP 1K0 1/16W +-5%
R612		038-13220-00	RES 0603 CHIP 220E 1/16W +-5%	R698		038-14100-00	RES 0603 CHIP 1K0 1/16W +-5%
R613		038-16100-00	RES 0603 CHIP 100K 1/16W +-5%	R699		038-14100-00	RES 0603 CHIP 1K0 1/16W +-5%
R614		038-16220-00	RES 0603 CHIP 220K 1/16W +-5%	R700		038-15100-00	RES 0603 CHIP 10K 1/16W +-5%
R615		038-14220-00	RES 0603 CHIP 2K2 1/16W +-5%	R701		038-15100-00	RES 0603 CHIP 10K 1/16W +-5%
R616		038-14220-00	RES 0603 CHIP 2K2 1/16W +-5%	R702		038-15100-00	RES 0603 CHIP 10K 1/16W +-5%
R617		038-14680-00	RES 0603 CHIP 6K8 1/16W +-5%	R703		038-15100-00	RES 0603 CHIP 10K 1/16W +-5%
R618		038-17100-00	RES 0603 CHIP 1M 1/16W +-5%	R704		038-15100-00	RES 0603 CHIP 10K 1/16W +-5%

Ref	Var	IPN	Description	Ref	Var	IPN	Description
R705		038-15100-00	RES 0603 CHIP 10K 1/16W +-5%				
R706		038-15100-00	RES 0603 CHIP 10K 1/16W +-5%				
R707		038-15100-00	RES 0603 CHIP 10K 1/16W +-5%				
R708		038-10000-00	RES 0603 CHIP ZERO OHM 1/16W +-5%				
#R710		038-10000-00	RES 0603 CHIP ZERO OHM 1/16W +-5%				
#R712		038-10000-00	RES 0603 CHIP ZERO OHM 1/16W +-5%				
#R713		038-10000-00	RES 0603 CHIP ZERO OHM 1/16W +-5%				
#R714		038-10000-00	RES 0603 CHIP ZERO OHM 1/16W +-5%				
R720		038-10000-00	RES 0603 CHIP ZERO OHM 1/16W +-5%				
R721		038-15470-00	RES 0603 CHIP 47K 1/16W +-5%				
#R722		036-16330-00	RES M/F 0805 CHIP 330K 5%				
#R723		038-16220-00	RES 0603 CHIP 220K 1/16W +-5%				
R724		038-15270-00	RES 0603 CHIP 27K 1/16W +-5%				
R725		038-15100-00	RES 0603 CHIP 10K 1/16W +-5%				
R726		038-15270-00	RES 0603 CHIP 27K 1/16W +-5%				
R727		038-15470-00	RES 0603 CHIP 47K 1/16W +-5%				
#R735		038-15100-00	RES 0603 CHIP 10K 1/16W +-5%				
#SPEC1		038-10000-00	RES 0603 CHIP ZERO OHM 1/16W +-5%				
S1		240-10000-07	CONN SMD SKT 16WAY 2ROW MICROMATCH				
S2		240-10000-06	CONN SMD SKT 12WAY 2ROW MICROMATCH				
S8		240-10000-07	CONN SMD SKT 16WAY 2ROW MICROMATCH				
S13		240-10000-06	CONN SMD SKT 12WAY 2ROW MICROMATCH				
S14		240-10000-07	CONN SMD SKT 16WAY 2ROW MICROMATCH				
S15		240-10000-07	CONN SMD SKT 16WAY 2ROW MICROMATCH				
SK505		240-04020-42	SKT 44 PIN SMD PLCC CHIP CARRIER				
X501		274-01070-00	XTAL 4.000MHZ HC49U/S C/W TEFLON INSULAT				

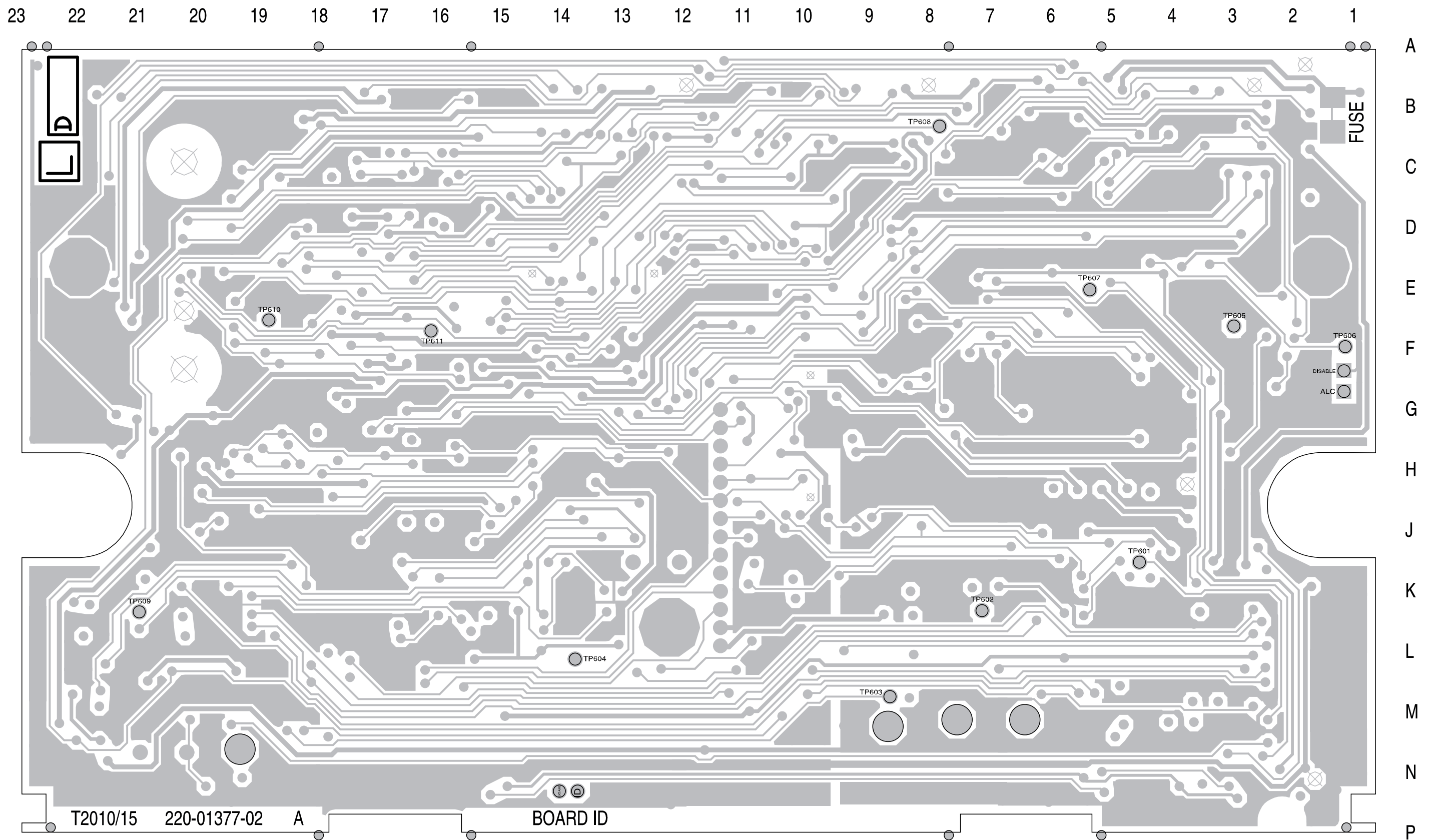
T2010 & T2015 HC05 Logic Mechanical & Miscellaneous Parts

IPN	Description	IPN	Description
219-02584-00	CABLE ASSEMBLY T2000 PWR CABLE		
220-01377-02	(L) PCB T2010/15 LOGIC HC05 COMMON PLATFOR		
240-00020-12	PLUG MICROPHONE BT SR937 (PIN 2 MISSING)		
240-00100-13	PLUG COAX BNC CORD MTG CRIMP URM76		
240-02010-75	SKT RECEPTL SML 172775-1		
240-04021-63	CONN 2WAY 24AWG (BLACK) INLINE HERMAPHRODITIC		
252-00010-37	MIC AWC DYNAMIC 600E 6WAY M095D TINSEL SHLD'D		
252-00010-49	MIC CLIP (SPRING STEEL CONTACT)		
265-00010-60	FUSE 10A 12V AUTOMOTIVE STAPLE TYPE		
303-23134-02	COVER TOP A1M2504 T2000 PNTD CMPLT		
303-30062-02	CRADLE BODY A3M2551 T2000 BOTTOM		
303-30063-02	CRADLE BODY A3M2552 T2000 TOP		
303-30064-00	CRADLE CLIP A1M2550 T2000		
303-30065-03	KEY T2000 SII		
340-00010-23	FUSEHLDR INLINE 3M 972		
349-00010-49	SCREW SELFTAP NO 10X1/2 IN TYPE AB PAN POZI BZ		
349-00020-32	SCREW TAPTITE M3X8MM PAN POZI BZ		
353-00010-32	WASHER M5 SHAKEPROOF EXT BZ		
362-01028-00	GASKET A4M2652 130X3MM CONDUCT STRIPS		
360-02003-01	GROMMET MIC CORD T2000 SII		
365-00100-09	LABEL WHITE VINYL 15X11MM S/A		
365-01376-00	LABEL A4A724 SOFTWARE		
365-01391-01	(L)LABEL BLNK 30*10.8MM TAMPERMARK VOID MA		
369-00020-46	TAPE 6 X 6MM FOAM 1 SIDE S/A		
399-00010-52	BAG PLASTIC 100*150MM		
410-01099-01	(L) PKG CARTON T2000 SERIES II		
410-01101-00	CARTON T700/T2000 OUTER (5 UNIT EA)		

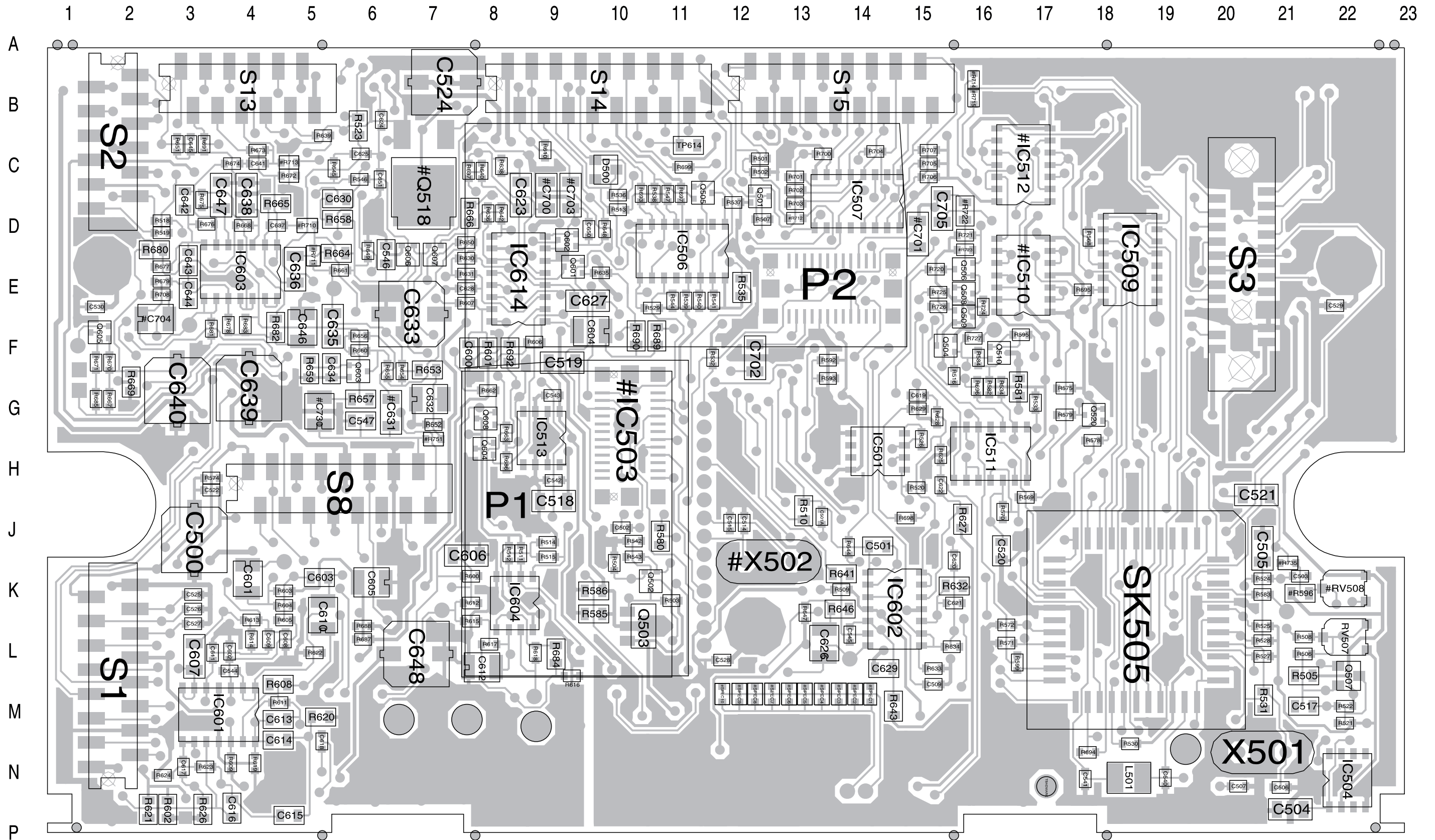
T2010 & T1015 HC05 Logic Grid Reference Index (IPN 220-01377-02)

Device	PCB	Circuit	Device	PCB	Circuit	Device	PCB	Circuit	Device	PCB	Circuit
ALC	2:G1	1-V0	C629	1:L14	1-N0	IC602	1:K15	1-O0	R525	1:K21	1-G8
			C630	1:C5	1-T1	IC602	1:K15	1-T3	R526	1:G15	1-F8
BOARD	2:N14	1-T4	#C631	1:G6	1-S2	IC603	1:E4	1-U3	R527	1:L21	1-G9
			C632	1:G7	1-T2	IC603	1:E4	1-P0	R528	1:L21	1-H8
C500	1:J3	1-B6	C633	1:E7	1-U2	IC603	1:E4	1-V1	R529	1:E11	1-F8
C501	1:J14	1-C8	C634	1:F5	1-U1	IC603	1:E4	1-R0	R530	1:M19	1-I8
C502	1:J10	1-B3	C635	1:F5	1-U2	IC603	1:E4	1-A2	R531	1:M21	1-G6
C503	1:K21	1-E5	C636	1:E5	1-V1	IC604	1:K8	1-H2	R532	1:F12	1-J7
C504	1:P21	1-H9	C637	1:D4	1-U1	IC604	1:K8	1-V3	R533	1:G17	1-I5
C505	1:J21	1-H8	C638	1:C4	1-V0	IC604	1:K8	1-C5	R534	1:G16	1-I5
C506	1:N21	1-G6	C639	1:G4	1-V0	IC614	1:E8	1-J1	R535	1:E12	1-K4
C507	1:N20	1-H6	C640	1:G3	1-U0	IC614	1:E8	1-C1	R536	1:C10	1-K4
C509	1:L15	1-C7	C641	1:C4	1-S0	IC614	1:E8	1-M0	R537	1:D12	1-K4
C514	1:J12	1-I6	C642	1:C3	1-R1	IC614	1:E8	1-N1	R538	1:C11	1-L5
C515	1:J12	1-J6	C643	1:D3	1-Q0	ID	2:N14	1-T4	R539	1:E11	1-L5
C517	1:M21	1-D8	C644	1:E3	1-Q0				R540	1:E11	1-L5
C518	1:H9	1-A6	C645	1:C3	1-B9	L501	1:N19	1-I4	R541	1:E12	1-M5
C519	1:F9	1-B7	C646	1:F5	1-Q0				R542	1:J10	1-E9
C520	1:J16	1-H5	C647	1:C4	1-S0	P1	1:G10	1-U9	R543	1:J10	1-D9
C521	1:H21	1-H5	C648	1:L7	1-C0	P2	1:E14	1-U8	R544	1:E11	1-Q7
C522	1:H3	1-B6	C650	1:D10	1-L1				R546	1:C6	1-Q4
C524	1:B7	1-B8	C651	1:C6	1-N1	Q501	1:C12	1-C9	R547	1:C11	1-L5
C525	1:K3	1-E5	#C700	1:C9	1-L1	Q502	1:K11	1-D9	R568	1:D18	1-L7
C526	1:K3	1-E5	#C701	1:D15	1-P3	Q503	1:K10	1-D9	R569	1:H17	1-G5
C527	1:K3	1-F5	C702	1:F12	1-R1	Q504	1:F16	1-D6	R570	1:J16	1-G5
C528	1:L12	1-S9	#C703	1:C9	1-V5	Q505	1:C12	1-K4	R571	1:L17	1-I6
C529	1:E22	1-S9	#C704	1:E2	1-P1	Q506	1:E16	1-C6	R572	1:K17	1-I6
C530	1:E2	1-T9	C705	1:D15	1-C6	Q507	1:L22	1-D7	R574	1:H3	1-B6
C540	1:N19	1-I4	#C730	1:G5	1-S1	Q508	1:E16	1-C6	R575	1:G17	1-E6
C541	1:N18	1-I4	C501A	1:J13	1-C8	Q509	1:E16	1-D6	R578	1:G18	1-F6
C542	1:H9	1-A6				Q510	1:F16	1-E6	R579	1:G17	1-E6
C543	1:G9	1-B6	D500	1:C10	1-K3	#Q518	1:C7	1-J4	R580	1:J11	1-J6
C544	1:L4	1-B0	D500	1:C10	1-K3	Q520	1:G18	1-E6	R581	1:G17	1-E7
C545	1:L14	1-N0	DISABLE	2:F1	1-U0	Q601	1:E9	1-J1	R582	1:G16	1-E7
C546	1:D6	1-V1				Q602	1:D9	1-M1	R583	1:K21	1-G9
C547	1:G6	1-S1	IC501	1:H14	1-E8	Q603	1:F6	1-U1	R584	1:F16	1-E6
C600	1:F8	1-C1	#IC503	1:J12	1-I6	Q604	1:H8	1-W2	R585	1:K10	1-C8
C601	1:K4	1-B1	IC504	1:N22	1-H9	Q605	1:F2	1-T0	R586	1:K10	1-D8
C602	1:L4	1-B0	IC506	1:D11	1-M4	Q606	1:D7	1-W1	R592	1:F14	1-H5
C603	1:K5	1-C1	IC507	1:C14	1-O4	Q607	1:D7	1-W0	R593	1:F14	1-H4
C604	1:F10	1-B2	IC509	1:D19	1-L7	Q608	1:G8	1-W2	R595	1:F17	1-E6
C605	1:K6	1-B0	#IC510	1:E17	1-V6				#R596	1:K21	1-G4
C606	1:J8	1-C2	#IC510	1:E17	1-O2	R501	1:C12	1-B9	R599	1:L17	1-I6
C607	1:L3	1-E2	#IC510	1:E17	1-W5	R502	1:C12	1-C9	R600	1:K8	1-B2
C608	1:L5	1-D1	#IC510	1:E17	1-V6	R503	1:K11	1-D9	R601	1:F8	1-B1
C609	1:L4	1-E1	#IC510	1:E17	1-O3	R504	1:J10	1-D8	R602	1:P3	1-D0
C610	1:K5	1-D0	IC511	1:H16	1-V3	R505	1:L21	1-D7	R603	1:K5	1-B0
C611	1:L3	1-E1	IC511	1:H16	1-G5	R506	1:L21	1-D7	R604	1:K5	1-B0
C612	1:L8	1-G1	IC511	1:H16	1-N5	R507	1:D12	1-C9	R605	1:K5	1-B0
C613	1:M5	1-E0	IC511	1:H16	1-I5	R508	1:L21	1-D7	R606	1:F9	1-B1
C614	1:M5	1-E0	IC511	1:H16	1-J4	R509	1:K14	1-B7	R607	1:E8	1-D1
C615	1:P5	1-F0	#IC512	1:C17	1-K3	R510	1:J13	1-C8	R608	1:L5	1-D0
C616	1:N4	1-F0	#IC512	1:C17	1-L3	R511	1:J9	1-B6	R609	1:N4	1-D0
C617	1:N3	1-G0	#IC512	1:C17	1-M2	R512	1:J8	1-C6	R610	1:C9	1-F4
C618	1:M5	1-H0	#IC512	1:C17	1-V5	R513	1:D10	1-K3	R611	1:M5	1-D1
C619	1:G15	1-I0	#IC512	1:C17	1-L2	R514	1:J9	1-C4	R612	1:K8	1-D2
C620	1:J16	1-J0	IC513	1:G9	1-A7	R515	1:J9	1-C5	R613	1:K4	1-D1
C621	1:K16	1-J0	IC601	1:M4	1-E0	R516	1:F16	1-D6	R614	1:L4	1-E1
C622	1:H15	1-H0	IC601	1:M4	1-T3	R518	1:D3	1-B7	R615	1:K8	1-G2
C623	1:C9	1-L0	IC601	1:M4	1-C0	R519	1:D3	1-B7	R616	1:L9	1-G1
C624	1:B6	1-N1	IC601	1:M4	1-F1	R520	1:H15	1-E7	R617	1:L8	1-G2
C625	1:C6	1-N1	IC601	1:M4	1-G0	R521	1:M22	1-D8	R618	1:L9	1-H1
C626	1:L14	1-O0	IC602	1:K15	1-H0	R522	1:M22	1-D8	R619	1:N4	1-E0
C627	1:E10	1-M0	IC602	1:K15	1-C7	R523	1:B6	1-D4	R620	1:M5	1-F0
C628	1:E8	1-M0	IC602	1:K15	1-K0	R524	1:K21	1-E5	R621	1:P2	1-F0

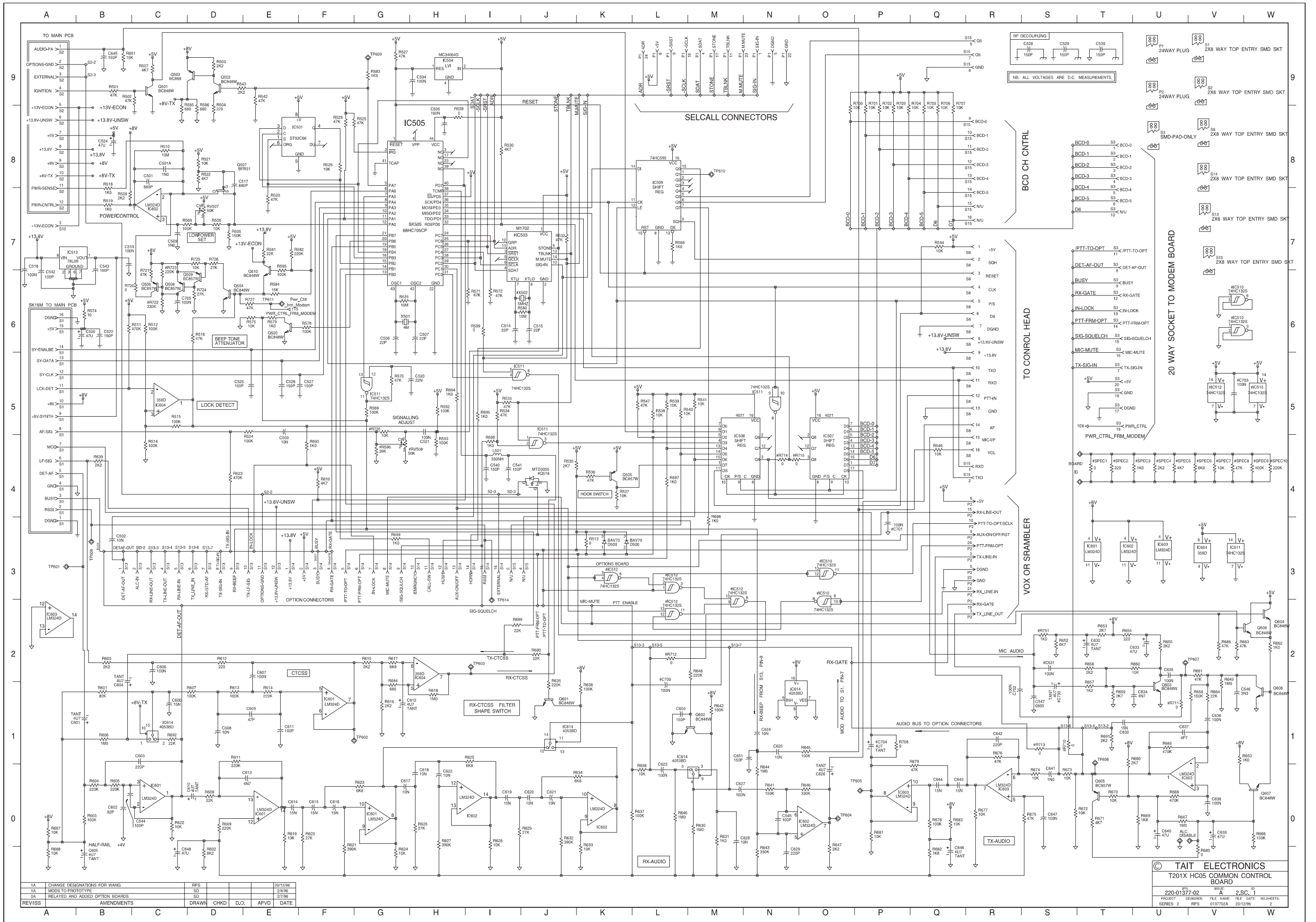
Device	PCB	Circuit	Device	PCB	Circuit	Device	PCB	Circuit	Device	PCB	Circuit
R622	1:L5	1-C0	R691	1:C3	1-T1	X501	1:N21	1-G6			
R623	1:N3	1-G0	R692	1:F8	1-C1	#X502	1:J13	1-J6			
R624	1:N3	1-G0	R693	1:C10	1-F4						
R625	1:H15	1-I1	R694	1:N18	1-H5						
R626	1:P3	1-H0	R695	1:E18	1-I5						
R627	1:J16	1-H0	R696	1:G16	1-I4						
R628	1:G15	1-I0	R697	1:C11	1-L4						
R629	1:G15	1-I0	R698	1:J15	1-M3						
R630	1:D8	1-M0	R699	1:C11	1-G3						
R631	1:E8	1-M0	R700	1:C13	1-O8						
R632	1:K16	1-J0	R701	1:C13	1-P8						
R633	1:L15	1-K0	R702	1:C13	1-P8						
R634	1:L16	1-K0	R703	1:D13	1-P8						
R635	1:E10	1-J1	R704	1:C14	1-P8						
R636	1:D8	1-K1	R705	1:C15	1-Q8						
R637	1:C8	1-L0	R706	1:C15	1-Q8						
R638	1:C8	1-L0	R707	1:C15	1-Q8						
R639	1:B5	1-B4	R708	1:E3	1-P1						
R640	1:C8	1-L0	#R710	1:D5	1-S1						
R641	1:K14	1-N0	#R711	1:D5	1-U1						
R642	1:D8	1-M1	#R712	1:D13	1-L2						
R643	1:M15	1-N0	#R713	1:C5	1-S1						
R644	1:J14	1-N0	#R714	1:B16	1-N4						
R645	1:C5	1-O1	#R715	1:B16	1-N4						
R646	1:K14	1-O0	R720	1:E15	1-C6						
R647	1:K13	1-O0	R721	1:D16	1-C6						
R648	1:D10	1-M2	#R722	1:D16	1-C6						
R649	1:D6	1-V1	#R723	1:D16	1-C6						
R650	1:D8	1-V1	R724	1:E16	1-D6						
R651	1:C3	1-B9	R725	1:E15	1-D7						
R652	1:G7	1-S2	R726	1:E15	1-D7						
R653	1:F7	1-T2	R727	1:F16	1-E6						
R654	1:F7	1-T2	#R735	1:J21	1-G5						
R655	1:F6	1-U2	#R751	1:G7	1-S2						
R656	1:F6	1-T2	RV507	1:L22	1-D7						
R657	1:G6	1-T1	#RV508	1:K22	1-G4						
R658	1:D5	1-V1									
R659	1:F5	1-T1	S1	1:L2	1-V9						
R660	1:F6	1-U2	S2	1:B2	1-V9						
R661	1:E6	1-V2	S3	1:E20	1-U8						
R662	1:G8	1-W2	S8	1:H5	1-V8						
R663	1:G8	1-V2	S13	1:B4	1-V7						
R664	1:D5	1-V1	S14	1:B10	1-V7						
R665	1:D4	1-U1	S15	1:B14	1-V6						
R666	1:D8	1-W0	SK505	1:K19	1-G6						
R667	1:G2	1-U0	#SPEC1	1:M14	1-T4						
R668	1:D4	1-U0	#SPEC2	1:M14	1-T4						
R669	1:F2	1-U0	#SPEC3	1:M14	1-U4						
R670	1:F2	1-T0	#SPEC4	1:M13	1-U4						
R671	1:F2	1-T0	#SPEC5	1:M13	1-U4						
R672	1:C5	1-S0	#SPEC6	1:M13	1-V4						
R673	1:C4	1-S0	#SPEC7	1:M13	1-V4						
R674	1:C4	1-S0	#SPEC8	1:M12	1-V4						
R675	1:C3	1-S0	#SPEC9	1:M12	1-W4						
R676	1:D3	1-R1	#SPEC10	1:M12	1-W4						
R677	1:E3	1-R0									
R678	1:F4	1-Q0	TP601	2:J5	1-A3						
R679	1:E3	1-Q0	TP602	2:K7	1-G1						
R680	1:D2	1-T1	TP603	2:M9	1-I2						
R681	1:F3	1-P0	TP604	2:L14	1-O0						
R682	1:F4	1-Q0	TP605	2:F3	1-P0						
R683	1:F4	1-Q0	TP606	2:F1	1-T1						
R684	1:L9	1-G1	TP607	2:E5	1-U2						
R685	1:G2	1-V0	TP608	2:B8	1-B3						
R686	1:H8	1-V2	TP609	2:K21	1-G9						
R687	1:L6	1-A0	TP610	2:E19	1-M8						
R688	1:K6	1-A0	TP611	2:F16	1-E6						
R689	1:F11	1-I2	TP614	1:C11	1-I2						
R690	1:F10	1-J2									



T2010 & T2015 HC05 Logic PCB
Bottom Side Layout
IPN 220-01377-02



T2010 & T2015 HC05 Logic PCB
Top Side Layout
IPN 220-01377-02



1A	CHANGE DESIGNATIONS FOR WANG	RPS		2012/96		
1A	MODS TO PROTOTYPE	SD		2/96		
2A	RELATED AND ADDED OPTION BOARDS	SD		2/796		
REVISIONS	AMENDMENTS	DRAWN	CHKD	D.O.	APVD	DATE

© TAIT ELECTRONICS
T201X HC05 COMMON CONTROL BOARD
IPN 220-01377-02 REV. 2.5C.1
PROJECT: DESIGNER: FILE NAME: DATE: NO. SHEETS: 2
SERIES: 2 RPS: 01/17/2024 2012/96

7.10 T2010 & T2015 HC05 Logic PCB

T2010 & T2015 HC05 Logic Parts List (IPN 220-01377-03)

Parts List Amendments

Ref	Var	IPN	Description	Ref	Var	IPN	Description
C500	016-08470-01		CAP ELECT SMD 6X4MM 47M 16V	C634	015-24470-08		CAP CER 0805 CHIP 4N7 10% X7R 50V
C501	015-23680-08		CAP CER 0805 CHIP 680P 10% X7R 50V	C635	015-06100-08		CAP CER 1206 CHIP 100N 10% X7R 50V
C501A	018-14100-00		CAP 0603 CHIP 1N 50V X7R +-10%	C636	015-06100-08		CAP CER 1206 CHIP 100N 10% X7R 50V
C502	018-15100-00		CAP 0603 CHIP 10N 50V X7R +-10%	C637	018-11470-10		CAP 0603 CHIP 4P7 50V NPO +0.1P
C503	018-15100-00		CAP 0603 CHIP 10N 50V X7R +-10%	C638	015-06100-08		CAP CER 1206 CHIP 100N 10% X7R 50V
C504	015-06100-08		CAP CER 1206 CHIP 100N 10% X7R 50V	C639	016-08470-01		CAP ELECT SMD 6X4MM 47M 16V
C505	015-06100-08		CAP CER 1206 CHIP 100N 10% X7R 50V	C640	016-08470-01		CAP ELECT SMD 6X4MM 47M 16V
C506	018-12220-10		CAP 0603 CHIP 22P 50V NPO +-1%	C641	018-14100-00		CAP 0603 CHIP 1N 50V X7R +-10%
C507	018-12220-10		CAP 0603 CHIP 22P 50V NPO +-1%	C642	015-23220-01		CAP CER 0805 CHIP 220P 5% NPO 50V
C509	018-14100-00		CAP 0603 CHIP 1N 50V X7R +-10%	C643	015-25150-08		CAP CER 0805 CHIP 15N 10% X7R 50V
C514	018-12220-10		CAP 0603 CHIP 22P 50V NPO +-1%	C644	015-25150-08		CAP CER 0805 CHIP 15N 10% X7R 50V
C515	018-12220-10		CAP 0603 CHIP 22P 50V NPO +-1%	C645	018-13150-00		CAP 0603 CHIP 150P 50V NPO +-5%
C517	015-23680-08		CAP CER 0805 CHIP 680P 10% X7R 50V	C646	014-07470-01		CAP TANT CHIP 4U7 'B' CASE 25V +-10% 267
C518	015-06100-08		CAP CER 1206 CHIP 100N 10% X7R 50V	C647	015-06100-08		CAP CER 1206 CHIP 100N 10% X7R 50V
C519	015-06100-08		CAP CER 1206 CHIP 100N 10% X7R 50V	C648	016-08470-01		CAP ELECT SMD 6X4MM 47M 16V
C520	015-25220-08		CAP CER 0805 CHIP 22N 10% X7R 50V	C650	018-13150-00		CAP 0603 CHIP 150P 50V NPO +-5%
C521	015-06100-08		CAP CER 1206 CHIP 100N 10% X7R 50V	C651	018-13150-00		CAP 0603 CHIP 150P 50V NPO +-5%
C522	018-13150-00		CAP 0603 CHIP 150P 50V NPO +-5%	#C700	015-06100-08		CAP CER 1206 CHIP 100N 10% X7R 50V
C524	016-08470-01		CAP ELECT SMD 6X4MM 47M 16V	C702	015-06100-08		CAP CER 1206 CHIP 100N 10% X7R 50V
C525	018-13150-00		CAP 0603 CHIP 150P 50V NPO +-5%	#C703	015-06100-08		CAP CER 1206 CHIP 100N 10% X7R 50V
C526	018-13150-00		CAP 0603 CHIP 150P 50V NPO +-5%	C705	015-06100-08		CAP CER 1206 CHIP 100N 10% X7R 50V
C527	018-13150-00		CAP 0603 CHIP 150P 50V NPO +-5%	#C730	014-07470-01		CAP TANT CHIP 4U7 'B' CASE 25V +-10% 26
C528	018-13150-00		CAP 0603 CHIP 150P 50V NPO +-5%				
C530	018-13150-00		CAP 0603 CHIP 150P 50V NPO +-5%	D500	001-10000-70	(S)	DIODE SMD BAV70 DUAL SWITCH SOT-23 C
C540	018-13150-00		CAP 0603 CHIP 150P 50V NPO +-5%				
C541	018-13150-00		CAP 0603 CHIP 150P 50V NPO +-5%	IC501	002-10936-60	(LS)	IC SMD ST93C66CM6 4K EEPROM SER MI
C542	018-13100-10		CAP 0603 CHIP 100P 50V NPO +-1%	IC504	002-10340-64	(S)	IC SMD MC34064 LO VOLT SENSE
C543	018-13100-10		CAP 0603 CHIP 100P 50V NPO +-1%	IC505	002-26870-59	(S)	IC MC68HC705C9ACFN 8BIT OTP MCU 44
C544	018-13100-10		CAP 0603 CHIP 100P 50V NPO +-1%	IC506	002-10140-21	(S)	IC MC14021BDR2 8BIT SHIFT REGSTR.SO
C545	018-13100-10		CAP 0603 CHIP 100P 50V NPO +-1%	IC507	002-10140-21	(S)	IC MC14021BDR2 8BIT SHIFT REGSTR.SO
C546	015-24330-08		CAP CER 0805 CHIP 3N3 10% X7R 50V	IC509	002-74905-95	(S)	IC SMD 74HC595 SHIFT REGISTER
C600	015-25150-08		CAP CER 0805 CHIP 15N 10% X7R 50V	#IC510	002-74901-32	(S)	IC SMD 74HC132 HCMOS QUAD SCHMT SO
C601	014-07470-01		CAP TANT CHIP 4U7 'B' CASE 25V +-10% 267	IC511	002-74901-32	(S)	IC SMD 74HC132 HCMOS QUAD SCHMT SO-
C602	018-12820-10		CAP 0603 CHIP 82P 50V NPO +-1%	IC513	002-10078-08	(S)	IC SMD 78L08 8V REG SO8
C603	015-23220-01		CAP CER 0805 CHIP 220P 5% NPO 50V	IC601	002-10003-24	(S)	IC SMD 324 QUAD OP AMP SO14
C604	014-07470-01		CAP TANT CHIP 4U7 'B' CASE 25V +-10% 267	IC602	002-10003-24	(S)	IC SMD 324 QUAD OP AMP SO14
C605	014-07470-01		CAP TANT CHIP 4U7 'B' CASE 25V +-10% 267	IC603	002-10003-24	(S)	IC SMD 324 QUAD OP AMP SO14
C606	015-06100-08		CAP CER 1206 CHIP 100N 10% X7R 50V	IC604	002-10003-58	(S)	IC SMD LM358 DUAL OP AMP
C607	015-06100-08		CAP CER 1206 CHIP 100N 10% X7R 50V	IC614	002-10040-53	(S)	IC 4053 SMD TRIPLE 2CH MULTI-PLEXR
C608	018-15100-00		CAP 0603 CHIP 10N 50V X7R +-10%				
C609	018-12470-10		CAP 0603 CHIP 47P 50V NPO +-1%	L501	056-10330-02	(L)	IND SMD 330NH SIEMENS SMID02
C610	014-07470-01		CAP TANT CHIP 4U7 'B' CASE 25V +-10% 267				
C611	018-13100-10		CAP 0603 CHIP 100P 50V NPO +-1%	P1	240-10000-01		CONN SMD 24WAY (PLUG)
C612	014-07470-01		CAP TANT CHIP 4U7 'B' CASE 25V +-10% 267	P2	240-10000-01		CONN SMD 24WAY (PLUG)
C613	015-24470-08		CAP CER 0805 CHIP 4N7 10% X7R 50V				
C614	015-25150-08		CAP CER 0805 CHIP 15N 10% X7R 50V	Q501	000-10084-81	(S)	XSTR SMD BC848BW NPN SOT-323 SMALL S
C615	015-25150-08		CAP CER 0805 CHIP 15N 10% X7R 50V	Q502	000-10084-81	(S)	XSTR SMD BC848BW NPN SOT-323 SMALL S
C616	015-25150-08		CAP CER 0805 CHIP 15N 10% X7R 50V	Q503	000-10008-69	(S)	XSTR SMD BC869 PNP 1W 2A SOT-89
C617	018-15100-00		CAP 0603 CHIP 10N 50V X7R +-10%	Q504	000-10084-81	(S)	XSTR SMD BC848BW NPN SOT-323 SMALL S
C618	018-15100-00		CAP 0603 CHIP 10N 50V X7R +-10%	Q505	000-10085-71	(S)	XSTR SMD BC857BW PNP SOT-323 SMALL S
C619	018-15100-00		CAP 0603 CHIP 10N 50V X7R +-10%	Q506	000-10085-71	(S)	XSTR SMD BC857BW PNP SOT-323 SMALL S
C620	018-15100-00		CAP 0603 CHIP 10N 50V X7R +-10%	Q507	000-10003-12	(S)	XSTR SMD BFR31 N JFET SOT-23
C621	018-15100-00		CAP 0603 CHIP 10N 50V X7R +-10%	Q508	000-10085-71	(S)	XSTR SMD BC857BW PNP SOT-323 SMALL S
C622	018-15100-00		CAP 0603 CHIP 10N 50V X7R +-10%	Q509	000-10085-71	(S)	XSTR SMD BC857BW PNP SOT-323 SMALL S
C623	015-06100-08		CAP CER 1206 CHIP 100N 10% X7R 50V	Q510	000-10084-81	(S)	XSTR SMD BC848BW NPN SOT-323 SMALL S
C624	018-15100-00		CAP 0603 CHIP 10N 50V X7R +-10%	Q520	000-10084-81	(S)	XSTR SMD BC848BW NPN SOT-323 SMALL S
C625	018-15100-00		CAP 0603 CHIP 10N 50V X7R +-10%	Q601	000-10084-81	(S)	XSTR SMD BC848BW NPN SOT-323 SMALL S
C626	014-07470-01		CAP TANT CHIP 4U7 'B' CASE 25V +-10% 267	Q602	000-10084-81	(S)	XSTR SMD BC848BW NPN SOT-323 SMALL S
C627	015-06100-08		CAP CER 1206 CHIP 100N 10% X7R 50V	Q603	000-10084-81	(S)	XSTR SMD BC848BW NPN SOT-323 SMALL S
C628	018-15100-00		CAP 0603 CHIP 10N 50V X7R +-10%	Q604	000-10084-81	(S)	XSTR SMD BC848BW NPN SOT-323 SMALL S
C629	015-23220-01		CAP CER 0805 CHIP 220P 5% NPO 50V	Q605	000-10085-71	(S)	XSTR SMD BC857BW PNP SOT-323 SMALL S
C630	015-25150-08		CAP CER 0805 CHIP 15N 10% X7R 50V	Q606	000-10084-81	(S)	XSTR SMD BC848BW NPN SOT-323 SMALL S
C632	014-07470-01		CAP TANT CHIP 4U7 'B' CASE 25V +-10% 267	Q607	000-10084-81	(S)	XSTR SMD BC848BW NPN SOT-323 SMALL S
C633	016-08470-01		CAP ELECT SMD 6X4MM 47M 16V	Q608	000-10084-81	(S)	XSTR SMD BC848BW NPN SOT-323 SMALL S

Ref	Var	IPN	Description	Ref	Var	IPN	Description
R501	038-15470-00	RES 0603 CHIP 47K 1/16W +-5%		R619	038-15100-00	RES 0603 CHIP 10K 1/16W +-5%	
R502	038-15470-00	RES 0603 CHIP 47K 1/16W +-5%		R620	036-15270-00	RES M/F 0805 CHIP 27K 5%	
R503	038-14220-00	RES 0603 CHIP 2K2 1/16W +-5%		R621	036-16390-00	RES M/F 0805 CHIP 390K 5%	
R504	038-13220-00	RES 0603 CHIP 220E 1/16W +-5%		R622	038-15100-00	RES 0603 CHIP 10K 1/16W +-5%	
R505	036-16150-00	RES M/F 0805 CHIP 150K 5%		R623	038-14680-00	RES 0603 CHIP 6K8 1/16W +-5%	
R506	038-15100-00	RES 0603 CHIP 10K 1/16W +-5%		R624	038-15100-00	RES 0603 CHIP 10K 1/16W +-5%	
R507	038-14470-00	RES 0603 CHIP 4K7 1/16W +-5%		R625	038-14680-00	RES 0603 CHIP 6K8 1/16W +-5%	
RV507	042-15500-01	RES PRESET SMD 50K +-25% 4X4.5X2.5MM 0.		R626	036-15270-00	RES M/F 0805 CHIP 27K 5%	
R508	038-16100-00	RES 0603 CHIP 100K 1/16W +-5%		R627	036-16390-00	RES M/F 0805 CHIP 390K 5%	
R509	038-14220-00	RES 0603 CHIP 2K2 1/16W +-5%		R628	038-15100-00	RES 0603 CHIP 10K 1/16W +-5%	
R510	036-18100-00	RES M/F 0805 CHIP 10M 10%		R629	038-15270-00	RES 0603 CHIP 27K 1/16W +-5%	
R511	038-16470-00	RES 0603 CHIP 470K 1/16W +-5%		R630	038-17100-00	RES 0603 CHIP 1M 1/16W +-5%	
R512	038-16100-00	RES 0603 CHIP 100K 1/16W +-5%		R631	038-14100-00	RES 0603 CHIP 1K0 1/16W +-5%	
R513	038-10000-00	RES 0603 CHIP ZERO OHM 1/16W +-5%		R632	036-16390-00	RES M/F 0805 CHIP 390K 5%	
R514	038-16100-00	RES 0603 CHIP 100K 1/16W +-5%		R633	038-15100-00	RES 0603 CHIP 10K 1/16W +-5%	
R515	038-16100-00	RES 0603 CHIP 100K 1/16W +-5%		R634	038-14680-00	RES 0603 CHIP 6K8 1/16W +-5%	
R516	038-15470-00	RES 0603 CHIP 47K 1/16W +-5%		R635	038-16220-00	RES 0603 CHIP 220K 1/16W +-5%	
R518	038-14100-00	RES 0603 CHIP 1K0 1/16W +-5%		R636	038-16100-00	RES 0603 CHIP 100K 1/16W +-5%	
R519	038-14100-00	RES 0603 CHIP 1K0 1/16W +-5%		R637	038-16100-00	RES 0603 CHIP 100K 1/16W +-5%	
R520	038-15470-00	RES 0603 CHIP 47K 1/16W +-5%		R638	038-15100-00	RES 0603 CHIP 10K 1/16W +-5%	
R521	038-15100-00	RES 0603 CHIP 10K 1/16W +-5%		R639	038-14220-00	RES 0603 CHIP 2K2 1/16W +-5%	
R522	038-14470-00	RES 0603 CHIP 4K7 1/16W +-5%		R640	038-17100-00	RES 0603 CHIP 1M 1/16W +-5%	
R523	036-16470-00	RES M/F 0805 CHIP 470K 5%		R641	036-16150-00	RES M/F 0805 CHIP 150K 5%	
R524	038-16100-00	RES 0603 CHIP 100K 1/16W +-5%		R642	038-16100-00	RES 0603 CHIP 100K 1/16W +-5%	
R525	038-15470-00	RES 0603 CHIP 47K 1/16W +-5%		R643	036-16330-00	RES M/F 0805 CHIP 330K 5%	
R526	038-15100-00	RES 0603 CHIP 10K 1/16W +-5%		R644	038-17100-00	RES 0603 CHIP 1M 1/16W +-5%	
R527	038-15470-00	RES 0603 CHIP 47K 1/16W +-5%		R645	038-16100-00	RES 0603 CHIP 100K 1/16W +-5%	
R528	038-10000-00	RES 0603 CHIP ZERO OHM 1/16W +-5%		R646	036-16330-00	RES M/F 0805 CHIP 330K 5%	
R529	038-15470-00	RES 0603 CHIP 47K 1/16W +-5%		R647	038-14220-00	RES 0603 CHIP 2K2 1/16W +-5%	
R530	038-14470-00	RES 0603 CHIP 4K7 1/16W +-5%		R648	038-16220-00	RES 0603 CHIP 220K 1/16W +-5%	
R531	036-18100-00	RES M/F 0805 CHIP 10M 10%		R649	038-17100-00	RES 0603 CHIP 1M 1/16W +-5%	
R532	038-15470-00	RES 0603 CHIP 47K 1/16W +-5%		R650	038-14100-00	RES 0603 CHIP 1K0 1/16W +-5%	
R533	038-15470-00	RES 0603 CHIP 47K 1/16W +-5%		R651	038-15150-00	RES 0603 CHIP 15K 1/16W +-5%	
R534	038-15470-00	RES 0603 CHIP 47K 1/16W +-5%		R652	038-14470-00	RES 0603 CHIP 4K7 1/16W +-5%	
R535	036-14270-00	RES M/F 0805 CHIP 2K7 5%		R653	036-14270-00	RES M/F 0805 CHIP 2K7 5%	
R536	038-15470-00	RES 0603 CHIP 47K 1/16W +-5%		R654	038-13220-00	RES 0603 CHIP 220E 1/16W +-5%	
R537	038-15100-00	RES 0603 CHIP 10K 1/16W +-5%		R655	038-14220-00	RES 0603 CHIP 2K2 1/16W +-5%	
R538	038-15100-00	RES 0603 CHIP 10K 1/16W +-5%		R656	038-14220-00	RES 0603 CHIP 2K2 1/16W +-5%	
R539	038-15100-00	RES 0603 CHIP 10K 1/16W +-5%		R657	036-14120-00	RES M/F 0805 CHIP 1K2 5%	
R540	038-15100-00	RES 0603 CHIP 10K 1/16W +-5%		R658	036-16150-00	RES M/F 0805 CHIP 150K 5%	
R541	038-15100-00	RES 0603 CHIP 10K 1/16W +-5%		R659	036-14270-00	RES M/F 0805 CHIP 2K7 5%	
R542	038-15470-00	RES 0603 CHIP 47K 1/16W +-5%		R660	038-15100-00	RES 0603 CHIP 10K 1/16W +-5%	
R543	038-14220-00	RES 0603 CHIP 2K2 1/16W +-5%		R661	038-15470-00	RES 0603 CHIP 47K 1/16W +-5%	
R544	038-15100-00	RES 0603 CHIP 10K 1/16W +-5%		R662	038-14100-00	RES 0603 CHIP 1K0 1/16W +-5%	
R546	038-15100-00	RES 0603 CHIP 10K 1/16W +-5%		R663	038-15470-00	RES 0603 CHIP 47K 1/16W +-5%	
R547	038-15470-00	RES 0603 CHIP 47K 1/16W +-5%		R664	036-15220-00	RES M/F 0805 CHIP 22K 5%	
R568	038-14100-00	RES 0603 CHIP 1K0 1/16W +-5%		R665	036-16470-00	RES M/F 0805 CHIP 470K 5%	
R569	038-16100-00	RES 0603 CHIP 100K 1/16W +-5%		R666	036-16150-00	RES M/F 0805 CHIP 150K 5%	
R570	038-15470-00	RES 0603 CHIP 47K 1/16W +-5%		R667	038-17100-00	RES 0603 CHIP 1M 1/16W +-5%	
R571	038-15470-00	RES 0603 CHIP 47K 1/16W +-5%		R668	038-16470-00	RES 0603 CHIP 470K 1/16W +-5%	
R572	038-15470-00	RES 0603 CHIP 47K 1/16W +-5%		R669	036-14180-00	RES M/F 0805 CHIP 1K8 5%	
R574	038-12100-00	RES 0603 CHIP 10E 1/16W +-5%		R670	038-15100-00	RES 0603 CHIP 10K 1/16W +-5%	
R575	038-15100-00	RES 0603 CHIP 10K 1/16W +-5%		R671	038-14470-00	RES 0603 CHIP 4K7 1/16W +-5%	
R578	038-16100-00	RES 0603 CHIP 100K 1/16W +-5%		R672	038-15100-00	RES 0603 CHIP 10K 1/16W +-5%	
R579	038-14100-00	RES 0603 CHIP 1K0 1/16W +-5%		R673	038-15100-00	RES 0603 CHIP 10K 1/16W +-5%	
R580	036-18100-00	RES M/F 0805 CHIP 10M 10%		R674	038-15100-00	RES 0603 CHIP 10K 1/16W +-5%	
R581	036-15220-00	RES M/F 0805 CHIP 22K 5%		R675	038-15470-00	RES 0603 CHIP 47K 1/16W +-5%	
R582	038-16220-00	RES 0603 CHIP 220K 1/16W +-5%		R676	038-15470-00	RES 0603 CHIP 47K 1/16W +-5%	
R583	038-14100-00	RES 0603 CHIP 1K0 1/16W +-5%		R677	038-15100-00	RES 0603 CHIP 10K 1/16W +-5%	
R584	038-15150-00	RES 0603 CHIP 15K 1/16W +-5%		R678	038-16100-00	RES 0603 CHIP 100K 1/16W +-5%	
R585	036-13680-00	RES M/F 0805 CHIP 680E 5%		R679	038-15470-00	RES 0603 CHIP 47K 1/16W +-5%	
R586	036-13680-00	RES M/F 0805 CHIP 680E 5%		R680	036-14270-00	RES M/F 0805 CHIP 2K7 5%	
R592	038-16100-00	RES 0603 CHIP 100K 1/16W +-5%		R681	038-15100-00	RES 0603 CHIP 10K 1/16W +-5%	
R593	038-16100-00	RES 0603 CHIP 100K 1/16W +-5%		R682	036-14180-00	RES M/F 0805 CHIP 1K8 5%	
R595	038-16100-00	RES 0603 CHIP 100K 1/16W +-5%		R683	038-15100-00	RES 0603 CHIP 10K 1/16W +-5%	
#R596	036-15390-00	RES M/F 0805 CHIP 39K 5%		R684	036-13680-00	RES M/F 0805 CHIP 680E 5%	
R599	038-10000-00	RES 0603 CHIP ZERO OHM 1/16W +-5%		R685	038-10000-00	RES 0603 CHIP ZERO OHM 1/16W +-5%	
R600	038-14220-00	RES 0603 CHIP 2K2 1/16W +-5%		R686	038-15470-00	RES 0603 CHIP 47K 1/16W +-5%	
R601	036-15820-00	RES M/F 0805 CHIP 82K 5%		R687	038-15100-00	RES 0603 CHIP 10K 1/16W +-5%	
R602	036-14820-00	RES M/F 0805 CHIP 8K2 5%		R688	038-15100-00	RES 0603 CHIP 10K 1/16W +-5%	
R603	038-16100-00	RES 0603 CHIP 100K 1/16W +-5%		R689	036-15220-00	RES M/F 0805 CHIP 22K 5%	
R604	038-16220-00	RES 0603 CHIP 220K 1/16W +-5%		R690	036-15220-00	RES M/F 0805 CHIP 22K 5%	
R605	038-16220-00	RES 0603 CHIP 220K 1/16W +-5%		R691	038-14220-00	RES 0603 CHIP 2K2 1/16W +-5%	
R606	038-17100-00	RES 0603 CHIP 1M 1/16W +-5%		R692	036-15220-00	RES M/F 0805 CHIP 22K 5%	
R607	038-16100-00	RES 0603 CHIP 100K 1/16W +-5%		R693	038-14100-00	RES 0603 CHIP 1K0 1/16W +-5%	
R608	036-15220-00	RES M/F 0805 CHIP 22K 5%		R694	038-14100-00	RES 0603 CHIP 1K0 1/16W +-5%	
R609	038-16220-00	RES 0603 CHIP 220K 1/16W +-5%		R695	038-14100-00	RES 0603 CHIP 1K0 1/16W +-5%	
R610	038-14470-00	RES 0603 CHIP 4K7 1/16W +-5%		R696	038-14100-00	RES 0603 CHIP 1K0 1/16W +-5%	
R611	038-16220-00	RES 0603 CHIP 220K 1/16W +-5%		R697	038-14100-00	RES 0603 CHIP 1K0 1/16W +-5%	
R612	038-13220-00	RES 0603 CHIP 220E 1/16W +-5%		R698	038-14100-00	RES 0603 CHIP 1K0 1/16W +-5%	
R613	038-16100-00	RES 0603 CHIP 100K 1/16W +-5%		R699	038-14100-00	RES 0603 CHIP 1K0 1/16W +-5%	
R614	038-16220-00	RES 0603 CHIP 220K 1/16W +-5%		R700	038-15100-00	RES 0603 CHIP 10K 1/16W +-5%	
R615	038-14220-00	RES 0603 CHIP 2K2 1/16W +-5%		R701	038-15100-00	RES 0603 CHIP 10K 1/16W +-5%	
R616	038-14220-00	RES 0603 CHIP 2K2 1/16W +-5%		R702	038-15100-00	RES 0603 CHIP 10K 1/16W +-5%	
R617	038-14680-00	RES 0603 CHIP 6K8 1/16W +-5%		R703	038-15100-00	RES 0603 CHIP 10K 1/16W +-5%	
R618	038-17100-00	RES 0603 CHIP 1M 1/16W +-5%		R704	038-15100-00	RES 0603 CHIP 10K 1/16W +-5%	

Ref	Var	IPN	Description	Ref	Var	IPN	Description
R705	038-15100-00	RES 0603 CHIP 10K 1/16W +-5%					
R706	038-15100-00	RES 0603 CHIP 10K 1/16W +-5%					
R707	038-15100-00	RES 0603 CHIP 10K 1/16W +-5%					
R708	038-10000-00	RES 0603 CHIP ZERO OHM 1/16W +-5%					
#R710	038-10000-00	RES 0603 CHIP ZERO OHM 1/16W +-5%					
#R712	038-10000-00	RES 0603 CHIP ZERO OHM 1/16W +-5%					
#R713	038-10000-00	RES 0603 CHIP ZERO OHM 1/16W +-5%					
#R714	038-10000-00	RES 0603 CHIP ZERO OHM 1/16W +-5%					
R720	038-10000-00	RES 0603 CHIP ZERO OHM 1/16W +-5%					
R721	038-15470-00	RES 0603 CHIP 47K 1/16W +-5%					
#R722	036-16330-00	RES M/F 0805 CHIP 330K 5%					
#R723	038-16220-00	RES 0603 CHIP 220K 1/16W +-5%					
R724	038-15270-00	RES 0603 CHIP 27K 1/16W +-5%					
R725	038-15100-00	RES 0603 CHIP 10K 1/16W +-5%					
R726	038-15270-00	RES 0603 CHIP 27K 1/16W +-5%					
R727	038-15470-00	RES 0603 CHIP 47K 1/16W +-5%					
#R735	038-15100-00	RES 0603 CHIP 10K 1/16W +-5%					
#SPEC1038-10000-00	RES 0603 CHIP ZERO OHM 1/16W +-5%						
S1	240-10000-07	CONN SMD SKT 16WAY 2ROW MICROMATCH					
S2	240-10000-06	CONN SMD SKT 12WAY 2ROW MICROMATCH					
S8	240-10000-07	CONN SMD SKT 16WAY 2ROW MICROMATCH					
S13	240-10000-06	CONN SMD SKT 12WAY 2ROW MICROMATCH					
S14	240-10000-07	CONN SMD SKT 16WAY 2ROW MICROMATCH					
S15	240-10000-07	CONN SMD SKT 16WAY 2ROW MICROMATCH					
SK505	240-04020-42	SKT 44 P IN SMD PLCC CHIP CARRIER					
X501	274-01070-00	XTAL 4.000MHZ HC49U/S C/W TEFLON INSULAT					

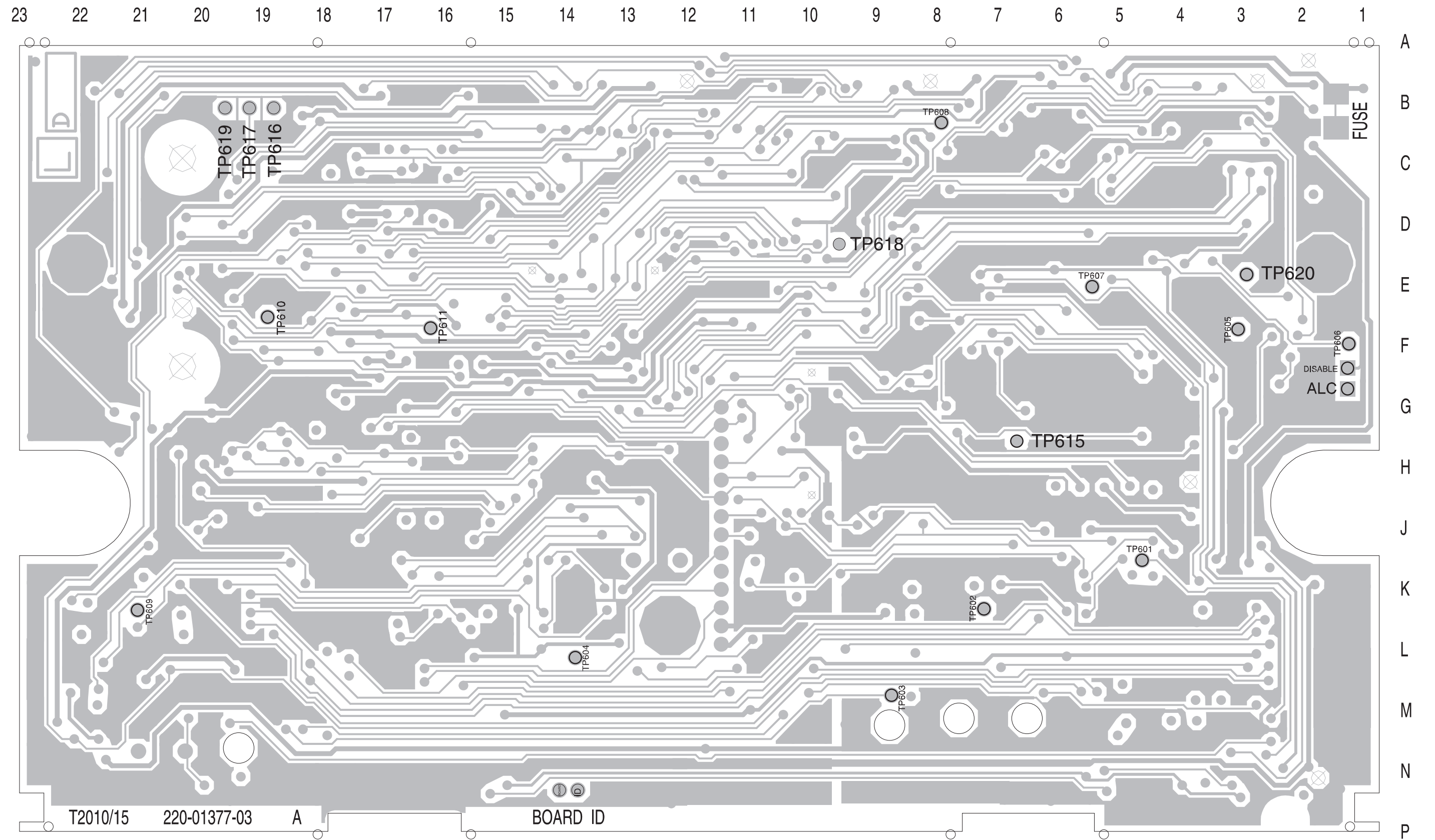
T2010 & T2015 HC05 Logic Mechanical & Miscellaneous Parts

IPN	Description	IPN	Description
219-02584-00	CABLE ASSEMBLY T2000 PWR CABLE		
220-01377-03	(L) PCB T2010/15 LOGIC HC05 COMMON PLATFOR		
240-00020-12	PLUG MICROPHONE BT SR937 (PIN 2 MISSING)		
240-00100-13	PLUG COAX BNC CORD MTG CRIMP URM76		
240-02010-75	SKT RECEPTL SML 172775-1		
240-04021-63	CONN 2WAY 24AWG (BLACK) INLINE HERMAPHRODITIC		
252-00010-37	MIC AWC DYNAMIC 600E 6WAY M095D TINSEL SHLD'D		
252-00010-49	MIC CLIP (SPRING STEEL CONTACT)		
265-00010-60	FUSE 10A 12V AUTOMOTIVE STAPLE TYPE		
303-23134-02	COVER TOP A1M2504 T2000 PNTD CMPLT		
303-30062-02	CRADLE BODY A3M2551 T2000 BOTTOM		
303-30063-02	CRADLE BODY A3M2552 T2000 TOP		
303-30064-00	CRADLE CLIP A1M2550 T2000		
303-30065-03	KEY T2000 SII		
340-00010-23	FUSEHLDR INLINE 3M 972		
349-00010-49	SCREW SELFTAP NO 10X1/2 IN TYPE AB PAN POZI BZ		
349-00020-32	SCREW TAPTITE M3X8MM PAN POZI BZ		
353-00010-32	WASHER M5 SHAKEPROOF EXT BZ		
360-02003-01	GROMMET MIC CORD T2000 SII		
362-01028-00	GASKET A4M2652 130X3MM CONDUCT STRIPS		
365-00100-09	LABEL WHITE VINYL 15X11MM S/A		
365-00100-20	LABEL WHITE S/A 28X11MM QUIKSTIK RW718/4		
365-01376-00	LABEL A4A724 SOFTWARE		
365-01391-01	(L)LABEL BLNK 30*10.8MM TAMPERMARK VOID MA		
369-00020-46	TAPE 6 X 6MM FOAM 1 SIDE S/A		
399-00010-52	BAG PLASTIC 100*150MM		
410-01099-01	(L) PKG CARTON T2000 SERIES II		
410-01101-01	CARTON T700/T2000 SII OUTER (5 UNIT EA)		

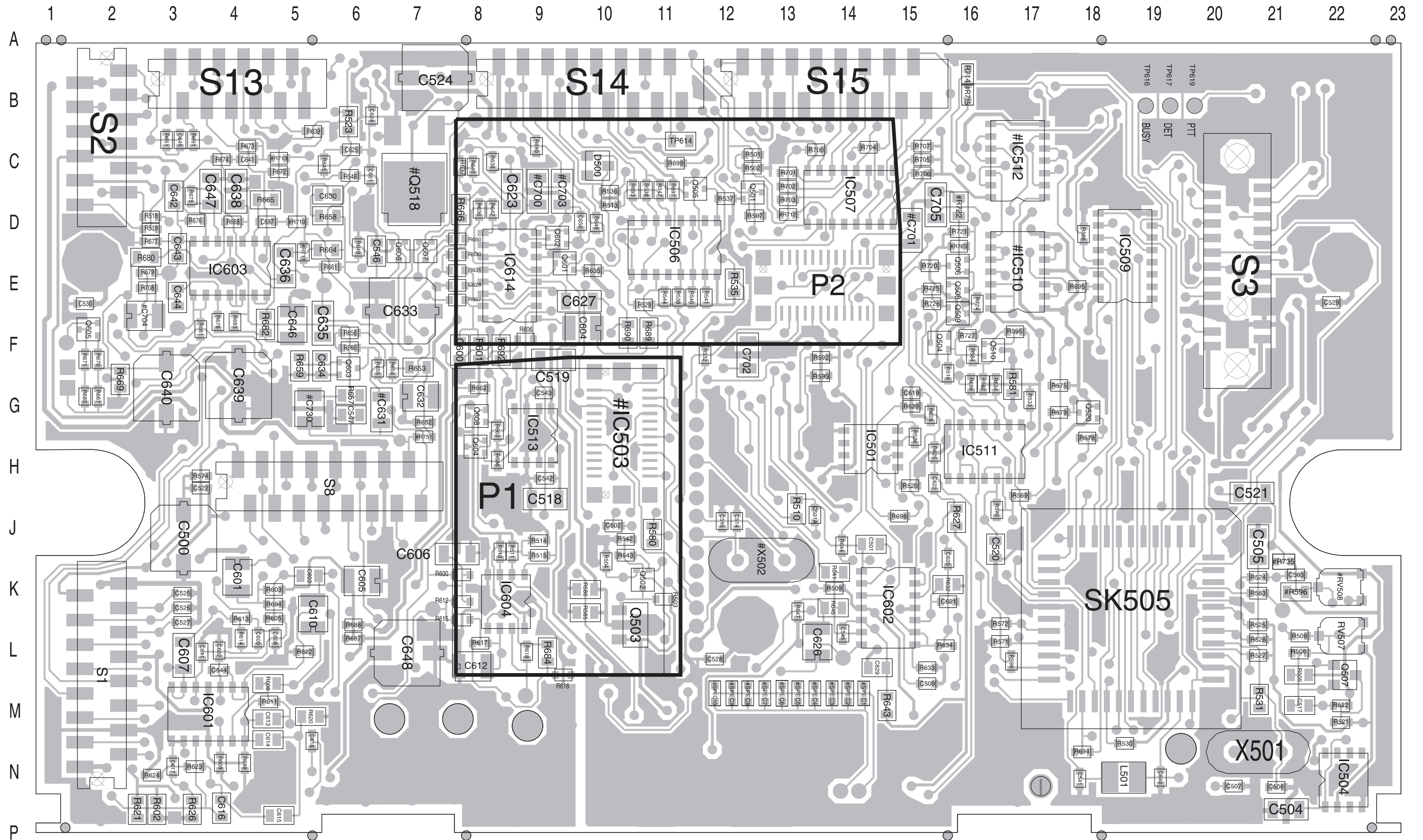
T2010 & T1015 HC05 Logic Grid Reference Index (IPN 220-01377-03)

Device	PCB	Circuit	Device	PCB	Circuit	Device	PCB	Circuit	Device	PCB	Circuit
ALC	2:G1	1-V0	C629	1:L14	1-N0	IC602	1:K15	1-O0	R525	1:K21	1-G8
			C630	1:C5	1-T1	IC602	1:K15	1-T3	R526	1:G15	1-F8
BOARD	2:N14	1-T4	#C631	1:G6	1-S2	IC603	1:E4	1-U3	R527	1:L21	1-G9
			C632	1:G7	1-T2	IC603	1:E4	1-P0	R528	1:L21	1-H8
C500	1:J3	1-B6	C633	1:E7	1-U2	IC603	1:E4	1-V1	R529	1:E11	1-F8
C501	1:J14	1-C8	C634	1:F5	1-U1	IC603	1:E4	1-R0	R530	1:M19	1-I8
C502	1:J10	1-B3	C635	1:F5	1-U2	IC603	1:E4	1-A2	R531	1:M21	1-G6
C503	1:K21	1-E5	C636	1:E5	1-V1	IC604	1:K8	1-H2	R532	1:F12	1-J7
C504	1:P21	1-H9	C637	1:D4	1-U1	IC604	1:K8	1-V3	R533	1:G17	1-I5
C505	1:J21	1-H8	C638	1:C4	1-V0	IC604	1:K8	1-C5	R534	1:G16	1-I5
C506	1:N21	1-G6	C639	1:G4	1-V0	IC614	1:E8	1-J1	R535	1:E12	1-K4
C507	1:N20	1-H6	C640	1:G3	1-U0	IC614	1:E8	1-C1	R536	1:C10	1-K4
C509	1:L15	1-C7	C641	1:C4	1-S0	IC614	1:E8	1-M0	R537	1:D12	1-K4
C514	1:J12	1-I6	C642	1:C3	1-R1	IC614	1:E8	1-N1	R538	1:C11	1-L5
C515	1:J12	1-J6	C643	1:D3	1-Q0	ID	2:N14	1-T4	R539	1:E11	1-L5
C517	1:M21	1-D8	C644	1:E3	1-Q0				R540	1:E11	1-L5
C518	1:H9	1-A6	C645	1:C3	1-B9	L501	1:N19	1-I4	R541	1:E12	1-M5
C519	1:F9	1-B7	C646	1:F5	1-Q0				R542	1:J10	1-E9
C520	1:J16	1-H5	C647	1:C4	1-S0	P1	1:G10	1-U9	R543	1:J10	1-D9
C521	1:H21	1-H5	C648	1:L7	1-C0	P2	1:E14	1-U8	R544	1:E11	1-Q7
C522	1:H3	1-B6	C650	1:D10	1-L1				R546	1:C6	1-Q4
C524	1:B7	1-B8	C651	1:C6	1-N1	Q501	1:C12	1-C9	R547	1:C11	1-L5
C525	1:K3	1-E5	#C700	1:C9	1-L1	Q502	1:K11	1-D9	R568	1:D18	1-L7
C526	1:K3	1-E5	#C701	1:D15	1-P3	Q503	1:K10	1-D9	R569	1:H17	1-G5
C527	1:K3	1-F5	C702	1:F12	1-R1	Q504	1:F16	1-D6	R570	1:J16	1-G5
C528	1:L12	1-S9	#C703	1:C9	1-V5	Q505	1:C12	1-K4	R571	1:L17	1-I6
C529	1:E22	1-S9	#C704	1:E2	1-P1	Q506	1:E16	1-C6	R572	1:K17	1-I6
C530	1:E2	1-T9	C705	1:D15	1-C6	Q507	1:L22	1-D7	R574	1:H3	1-B6
C540	1:N19	1-I4	#C730	1:G5	1-S1	Q508	1:E16	1-C6	R575	1:G17	1-E6
C541	1:N18	1-I4	C501A	1:J13	1-C8	Q509	1:E16	1-D6	R578	1:G18	1-F6
C542	1:H9	1-A6				Q510	1:F16	1-E6	R579	1:G17	1-E6
C543	1:G9	1-B6	D500	1:C10	1-K3	#Q518	1:C7	1-J4	R580	1:J11	1-J6
C544	1:L4	1-B0	D500	1:C10	1-K3	Q520	1:G18	1-E6	R581	1:G17	1-E7
C545	1:L14	1-N0	DISABLE	2:F1	1-U0	Q601	1:E9	1-J1	R582	1:G16	1-E7
C546	1:D6	1-V1				Q602	1:D9	1-M1	R583	1:K21	1-G9
C547	1:G6	1-S1	IC501	1:H14	1-E8	Q603	1:F6	1-U1	R584	1:F16	1-E6
C600	1:F8	1-C1	#IC503	1:J12	1-I6	Q604	1:H8	1-W2	R585	1:K10	1-C8
C601	1:K4	1-B1	IC504	1:N22	1-H9	Q605	1:F2	1-T0	R586	1:K10	1-D8
C602	1:L4	1-B0	IC506	1:D11	1-M4	Q606	1:D7	1-W1	R592	1:F14	1-H5
C603	1:K5	1-C1	IC507	1:C14	1-O4	Q607	1:D7	1-W0	R593	1:F14	1-H4
C604	1:F10	1-B2	IC509	1:D19	1-L7	Q608	1:G8	1-W2	R595	1:F17	1-E6
C605	1:K6	1-B0	#IC510	1:E17	1-V6				#R596	1:K21	1-G4
C606	1:J8	1-C2	#IC510	1:E17	1-O2	R501	1:C12	1-B9	R599	1:L17	1-I6
C607	1:L3	1-E2	#IC510	1:E17	1-W5	R502	1:C12	1-C9	R600	1:K8	1-B2
C608	1:L5	1-D1	#IC510	1:E17	1-V6	R503	1:K11	1-D9	R601	1:F8	1-B1
C609	1:L4	1-E1	#IC510	1:E17	1-O3	R504	1:J10	1-D8	R602	1:P3	1-D0
C610	1:K5	1-D0	IC511	1:H16	1-V3	R505	1:L21	1-D7	R603	1:K5	1-B0
C611	1:L3	1-E1	IC511	1:H16	1-G5	R506	1:L21	1-D7	R604	1:K5	1-B0
C612	1:L8	1-G1	IC511	1:H16	1-N5	R507	1:D12	1-C9	R605	1:K5	1-B0
C613	1:M5	1-E0	IC511	1:H16	1-I5	R508	1:L21	1-D7	R606	1:F9	1-B1
C614	1:M5	1-E0	IC511	1:H16	1-J4	R509	1:K14	1-B7	R607	1:E8	1-D1
C615	1:P5	1-F0	#IC512	1:C17	1-K3	R510	1:J13	1-C8	R608	1:L5	1-D0
C616	1:N4	1-F0	#IC512	1:C17	1-L3	R511	1:J9	1-B6	R609	1:N4	1-D0
C617	1:N3	1-G0	#IC512	1:C17	1-M2	R512	1:J8	1-C6	R610	1:C9	1-F4
C618	1:M5	1-H0	#IC512	1:C17	1-V5	R513	1:D10	1-K3	R611	1:M5	1-D1
C619	1:G15	1-I0	#IC512	1:C17	1-L2	R514	1:J9	1-C4	R612	1:K8	1-D2
C620	1:J16	1-J0	IC513	1:G9	1-A7	R515	1:J9	1-C5	R613	1:K4	1-D1
C621	1:K16	1-J0	IC601	1:M4	1-E0	R516	1:F16	1-D6	R614	1:L4	1-E1
C622	1:H15	1-H0	IC601	1:M4	1-T3	R518	1:D3	1-B7	R615	1:K8	1-G2
C623	1:C9	1-L0	IC601	1:M4	1-C0	R519	1:D3	1-B7	R616	1:L9	1-G1
C624	1:B6	1-N1	IC601	1:M4	1-F1	R520	1:H15	1-E7	R617	1:L8	1-G2
C625	1:C6	1-N1	IC601	1:M4	1-G0	R521	1:M22	1-D8	R618	1:L9	1-H1
C626	1:L14	1-O0	IC602	1:K15	1-H0	R522	1:M22	1-D8	R619	1:N4	1-E0
C627	1:E10	1-M0	IC602	1:K15	1-C7	R523	1:B6	1-D4	R620	1:M5	1-F0
C628	1:E8	1-M0	IC602	1:K15	1-K0	R524	1:K21	1-E5	R621	1:P2	1-F0

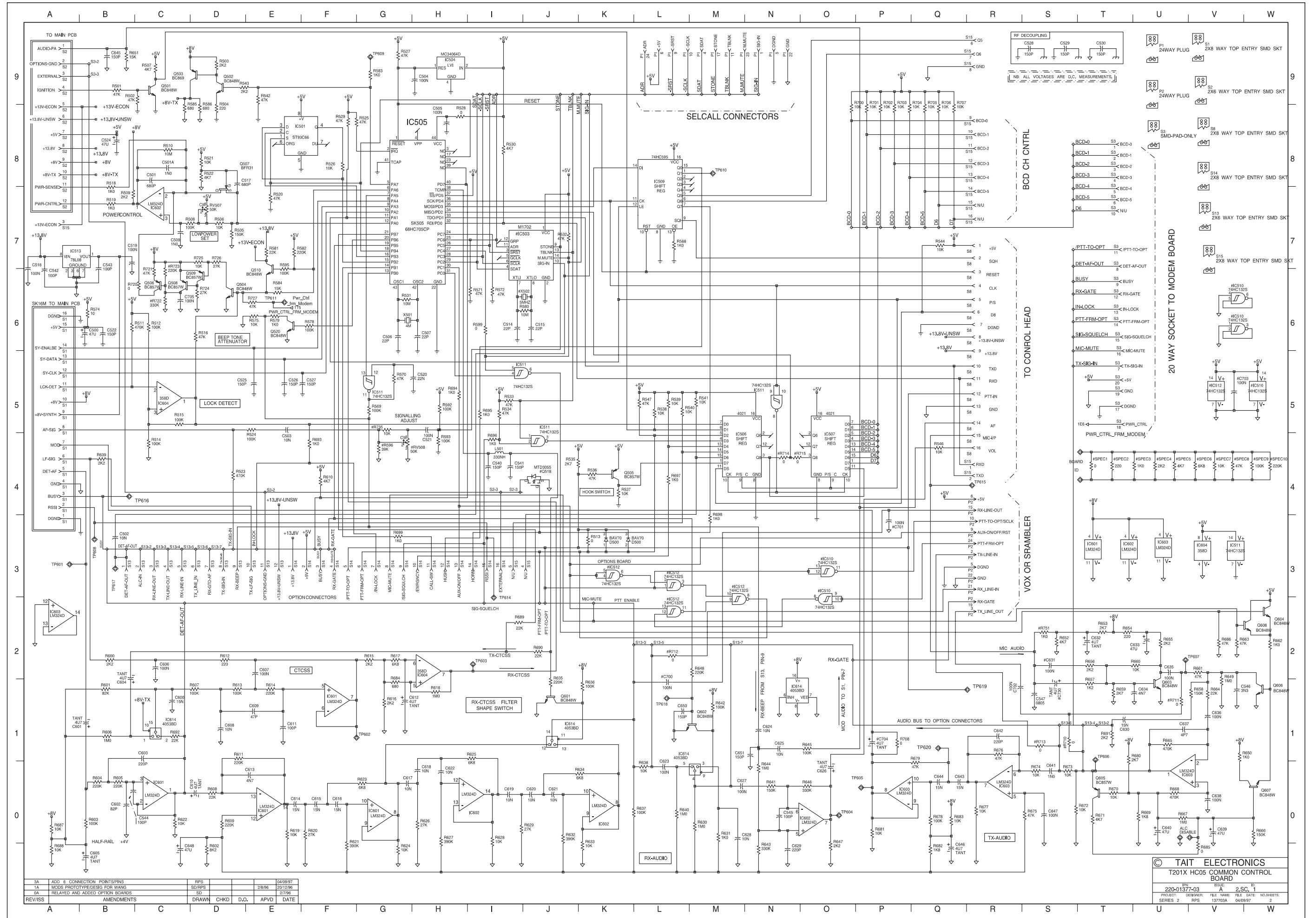
Device	PCB	Circuit	Device	PCB	Circuit	Device	PCB	Circuit	Device	PCB	Circuit
R622	1:L5	1-C0	R691	1:C3	1-T1	TP616	2:B19	1-B4			
R623	1:N3	1-G0	R692	1:F8	1-C1	TP617	2:B19	1-B3			
R624	1:N3	1-G0	R693	1:C10	1-F4	TP618	2:D10	1-L1			
R625	1:H15	1-I1	R694	1:N18	1-H5	TP619	2:B20	1-R1			
R626	1:P3	1-H0	R695	1:E18	1-I5	TP620	2:E3	1-Q1			
R627	1:J16	1-H0	R696	1:G16	1-I4						
R628	1:G15	1-I0	R697	1:C11	1-L4	X501	1:N21	1-G6			
R629	1:G15	1-I0	R698	1:J15	1-M3	#X502	1:J13	1-J6			
R630	1:D8	1-M0	R699	1:C11	1-G3						
R631	1:E8	1-M0	R700	1:C13	1-O8						
R632	1:K16	1-J0	R701	1:C13	1-P8						
R633	1:L15	1-K0	R702	1:C13	1-P8						
R634	1:L16	1-K0	R703	1:D13	1-P8						
R635	1:E10	1-J1	R704	1:C14	1-P8						
R636	1:D8	1-K1	R705	1:C15	1-Q8						
R637	1:C8	1-L0	R706	1:C15	1-Q8						
R638	1:C8	1-L0	R707	1:C15	1-Q8						
R639	1:B5	1-B4	R708	1:E3	1-P1						
R640	1:C8	1-L0	#R710	1:D5	1-S1						
R641	1:K14	1-N0	#R711	1:D5	1-U1						
R642	1:D8	1-M1	#R712	1:D13	1-L2						
R643	1:M15	1-N0	#R713	1:C5	1-S1						
R644	1:J14	1-N0	#R714	1:B16	1-N4						
R645	1:C5	1-O1	#R715	1:B16	1-N4						
R646	1:K14	1-O0	R720	1:E15	1-C6						
R647	1:K13	1-O0	R721	1:D16	1-C6						
R648	1:D10	1-M2	#R722	1:D16	1-C6						
R649	1:D6	1-V1	#R723	1:D16	1-C6						
R650	1:D8	1-V1	R724	1:E16	1-D6						
R651	1:C3	1-B9	R725	1:E15	1-D7						
R652	1:G7	1-S2	R726	1:E15	1-D7						
R653	1:F7	1-T2	R727	1:F16	1-E6						
R654	1:F7	1-T2	#R735	1:J21	1-G5						
R655	1:F6	1-U2	#R751	1:G7	1-S2						
R656	1:F6	1-T2	RV507	1:L22	1-D7						
R657	1:G6	1-T1	#RV508	1:K22	1-G4						
R658	1:D5	1-V1									
R659	1:F5	1-T1	S1	1:L2	1-V9						
R660	1:F6	1-U2	S2	1:B2	1-V9						
R661	1:E6	1-V2	S3	1:E20	1-U8						
R662	1:G8	1-W2	S8	1:H5	1-V8						
R663	1:G8	1-V2	S13	1:B4	1-V7						
R664	1:D5	1-V1	S14	1:B10	1-V7						
R665	1:D4	1-U1	S15	1:B14	1-V6						
R666	1:D8	1-W0	SK505	1:K19	1-G6						
R667	1:G2	1-U0	#SPEC1	1:M14	1-T4						
R668	1:D4	1-U0	#SPEC2	1:M14	1-T4						
R669	1:F2	1-U0	#SPEC3	1:M14	1-U4						
R670	1:F2	1-T0	#SPEC4	1:M13	1-U4						
R671	1:F2	1-T0	#SPEC5	1:M13	1-U4						
R672	1:C5	1-S0	#SPEC6	1:M13	1-V4						
R673	1:C4	1-S0	#SPEC7	1:M13	1-V4						
R674	1:C4	1-S0	#SPEC8	1:M12	1-V4						
R675	1:C3	1-S0	#SPEC9	1:M12	1-W4						
R676	1:D3	1-R1	#SPEC10	1:M12	1-W4						
R677	1:D3	1-R0									
R678	1:F4	1-Q0	TP601	2:J5	1-A3						
R679	1:E3	1-Q0	TP602	2:K7	1-G1						
R680	1:D3	1-T1	TP603	2:M9	1-I2						
R681	1:F3	1-P0	TP604	2:L14	1-O0						
R682	1:F4	1-Q0	TP605	2:F3	1-P0						
R683	1:F4	1-Q0	TP606	2:F1	1-T1						
R684	1:L9	1-G1	TP607	2:E5	1-U2						
R685	1:G2	1-V0	TP608	2:B8	1-B3						
R686	1:H8	1-V2	TP609	2:K21	1-G9						
R687	1:L6	1-A0	TP610	2:E19	1-M8						
R688	1:K6	1-A0	TP611	2:F16	1-E6						
R689	1:F11	1-I2	TP614	1:C11	1-I2						
R690	1:F10	1-J2	TP615	2:G7	1-R4						



T2010 & T2015 HC05 Logic PCB
Bottom Side Layout
IPN 220-01377-03



T2010 & T2015 HC05 Logic PCB
Top Side Layout
IPN 220-01377-03



REV/ISS	DESCRIPTION	DATE
1A	ADD 6 CONNECTION POINTS/PINS	04/09/97
1B	MODS PHOTO/CESIS FOR WANG	2/8/96
2A	RELATED AND ADDED OPTION BOARDS	2/7/96
3A	AMENDMENTS	APVD

© TAIT ELECTRONICS
T201X HC05 COMMON CONTROL BOARD
IPN 220-01377-03
REV: 2. SC. 1
PROJECT: DESIGNER FILE NAME DATE NO. SHEETS
SERIES: 2 RPS 137703A 04/09/97 2

